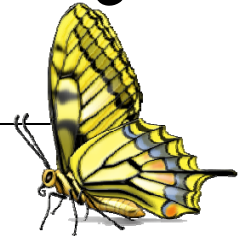




Port Washington Senior Center
Celebrating Summer Ice Cream Social Thur. Aug. 26
The Leisure Times
August 2010



Port Washington Senior Center
 102 East Pier Street
 (262) 284-5821
 E-mail: ckiener@ci.port-washington.wi.us

Catherine Kiener, Director
 Sharon Brown, Assistant
 , Environment

Center Office Hours: Monday – Thursday 8:30AM – 4:00PM
Friday 8:30AM- 2:00PM

Mission: To promote healthy aging by providing cost effective programs, classes, activities and services to citizens 55 years and better. Adopted April 10, 2002

Director’s Report

The Firehouse Friends are the members who participate in the open class of the Ozaukee County Fair. We hope to have a good showing as judging occurs after we go to print. If you can not make the fair, stop in the Center to view some of the items that will be on display after Mon. Aug. 2.

The current update on the Franklin Street Property: Haag Mueller Architects were hired to assist with the remodel and elevator. They will present a plan to the Commission on Aging on Mon. Aug. 30 at the Center at 7:00 PM.

Tell your friends and relatives about the **Summer Ice Cream Social** for seniors (yes, 55 & better), no charge thanks to Harris Bank & the Rotary at Rotary Park Aug. 26.

UPCOMING EVENTS:

- *Aqua Ex Celebrates 25 Years*
- **Day Trips with Seats Available in Aug, Sept, Oct, Nov, and Dec!**
- **Ice Cream Social Rotary Park Aug. 26, 1 – 3 PM**
- **Senior Center Month in Sept. with Lottery Lunch days; VITAS program on Five Wishes Sept. 21**

Sentry Receipts

Third quarter receipts for July 1 – September 30, 2010 due October 1st. Drop them off any time in the can by the sign in sheet on either level.

Pick-n-Save We Care Program

If you shop at Pick-n-Save choose Port Senior Center as a recipient of the Community dollar program. **The number is 620450!** Customer service can help you add this to your card. Thank you for helping!

Holiday Closing Monday, Sept 6, 2010
Senior Center & Dining Site are closed for Labor Day.

Thank You, Thank You

Garden Kudos: Please thank Ron Weiss for his hard work this summer in getting the front garden area and weeds under control.

July Newsletter Crew:

Geri Johnson, Nelda Bartz, Betty Last, Joan Hansen, Joan Murphy, Pat Voeller, Ethelynn Schumacher, and Rosemary Weiland

Volunteer Opportunities

“One person can make a difference and every person must try.” – John F. Kennedy

Display Assistant for Library- Interested in promoting the Senior Center for National Senior Center month? Help Rhea with a display at the library on Mon. Aug. 30. Contact Catherine by Aug. 23.

Senior Singers – Coordinator & Accompanist needed – Do you play piano or know someone who does? Contact the office by Sept. 1.

Office Volunteer Assistants- Regular & on-call volunteers are needed. Contact

Catherine if you would like to help answer phones, record memberships & payments.

Donations, Gifts or Memorial

Process for memorials: The memorial is to the Port Senior Center with or without a specified purpose. When specified, the Director and group review the purpose to improve or enhance the group. *You can make the Port Senior Center a recipient of a gift, any time of the year.*

The Friends of the Port Washington Senior Center is a 501-C organization which can accept your charitable gifts now or designated for the future. You may also choose to join as a member, pick up an application at the Senior Center.

Programs & Classes for Healthy Living

Aqua Exercise Class

CELEBRATING 25 YEARS (June 24, 1986)

One class is held on Tuesday, Thursday, and Friday at 6:40 AM. Cost is \$6.00 for member and \$10.00 for non-member per month. Class is held at the District Aquatic Center TJ School on Holden St. You do not need to get your hair wet, bring a towel & suit, and increase your flexibility. Register monthly at the Center or 284-5821.

No Falls Exercise Course

Date: Monday & Wednesday to Aug 11 (no classes Aug 2 & 4)

A combination of strength, balance, vision and flexibility exercises designed to reduce the number of falls in older adults. Class is at 9:45 at the park and rec building.

Arthritis Exercise Course

Session II Sept 8 – Oct 20 2010

Mon & Wed. at 9:45 am for seven weeks. The fee includes an Arthritis Foundation trained instructor with experience, exercise instruction & arthritis information. Member fee is \$30.00 per member & \$35.00 for guest. Please register with fee by Sept 2. Meets at Park & Rec building.

Ballroom Beginners Dance

Dates: Thursdays Aug. 5- Sept. 2

Registration due Aug. 3!

Instructor is Beth Smyth, a dance instructor with several competition wins in ballroom. Lower Level of Center 4:00 – 5:00 PM.

Fee: \$35 member; \$60 member couple and \$40 non-member/non-resident. Minimum class size is 3 people.

Ballroom Dance II Continuing Class

Dates: Thurs. Sept. 23- Oct. 21

Registration due Sept. 20

Build on the beginning steps of the dances. Instructor is a dance instructor with several competition wins in ballroom. Lower Level of Center 4:00 – 5:00 PM. This class is for those who have had dance lessons and would like a refresher on the steps. Also, a fun approach to wellness!

Fee: \$35 member; \$60 member couple and \$40 non-member/non-resident. Minimum class size is 3 people.

Adult Horseshoe League

League play Tuesdays until Aug.31 at 9:30 AM at the courts on Moore Road with the ending luncheon at the Center; lower level.

Silver Strikers Wii Bowling

New league for September 6 weeks begins Sept. 28. \$3.00 individual; 5.00 per team; \$11.00 per guest team. Register by Sept. 21.

Bocce Ball

Dates: Tuesdays to Sept. 14

Weekly team games on Tuesdays at 9:30 AM. **Please register** at the Center. *Rain days will meet at the Center for Wii!* Teams selected weekly. No fee for members and \$10.00 guests for the weekly games.

Lift to Live Class

Dates: Sept 7 – Oct. 21

Register with fee by Sept. 2

This 6-week exercise *program for women 40 and older* will be offered Tues. & Thurs. mornings 9:30 – 10:30 AM at the Park and Rec Office. The cost will be \$30 per member and \$40 per guest plus equipment. A Physician release form must be completed

New



New

for all new participants or present members with physical or health changes. Class size: minimum 8 max. 15

Tai Chi Beginners Course Session III

Dates: Mondays to Sept. 27

KT Rusch will teach this 12-week course at 9:00 AM. Tai Chi promotes balance, flexibility, & good overall health. Meets lower level of Senior Center.

Tai Chi Continuing Form Session III

Dates: Mondays to Sept. 27

Third 12- week session taught by KT Rusch. 10:00 AM lower level of senior Center.

More info coming

Tai Chi Beginners Course Session IV

Dates: Mondays Oct. 4 – Dec. 20

Tai Chi Continuing Form Session IV

Dates: Mondays Oct. 4 – Dec. 20

Friday Book Talk

The meeting will be Friday, July 9 at 9:30 AM at the Niederkorn Library. The book discussed will be Coop by Michael Perry, reviewed by Judy Olson. Come join this lively discussion. *Preview September 10: Guernsey Literary and Potato Peel Pie Society by Mary Ann Shaffer & Annie Barrows; reviewer Roz Warren.*

Ceramic Pottery- ALL Skill Levels

Meets Thursday mornings from 9:00 – 11:00 the fee is \$2.00 per week for members plus glaze, firing, and greenware piece! Non-member fee is \$4.00 per week plus supplies. Ceramic instructor will be present on the 1st, 3rd and 5th Thursdays of the month.



Chicks with Sticks

Meets Wednesday at 1:00 at the Center. Come share your patterns and ideas. Non-member fee is \$1.00 per week.

New

Drawing Lessons for Adults

Dates: Mondays September 20 – Oct. 18

Sharpen your drawing skills...for beginners, intermediate and advanced! All are welcome; you need not be a member or

senior to join this class! Erin Callahan Blum is the instructor. Register early to reserve your spot! Bring whatever supplies you have, or at least a sketchbook and pencils or charcoal pencils and eraser. **Class fee:** \$55.00 member and \$65.00 guest.

Registration & fee due Sept. 13. Minimum students: 5

Plein Air Painting – All Media

Dates: Wednesdays, August 4, 11, 18, & 25

Time: 3:00-5:00

This group will be open to painters of all media. We will meet at the senior center. Each week we will pick a place of interest to visit and paint. In case of rain, we will work on finishing our outdoor paintings indoors at the Senior Center. Laurie Sucharda, our instructor, has experience teaching a wide range of media and welcomes you to bring whatever supplies you already have; no need to get all new supplies. **The fee for this class will be run on a punch card system.** Because *Laurie will not know in advance how many, if any students will be coming to a session, she will wait at the center until 3:30 PM and if no one comes, the class will be cancelled.* Cost: 6 Lessons \$50.00 per senior center member \$60.00 per guest for 6- Class punch card.

Computer Lab Time –Mondays in August with a youth volunteer 12:30 – 1:30

the lab will be open for basic computer skill practice. Please register in the office by Monday Aug 2 for any Monday. Maximum: 2-3 per hour. **Cost:** \$1.00 for members and \$3.00 per guest.

New

Canasta or “Hand and Foot”

Players meet at 7:00 PM on the 1st & 3rd & 5th Monday: August 2nd and 16th. Everyone is welcome! **Non-member fee is \$1.00 per week.**

Learn to play Cribbage

Hands on cribbage learning sessions the 2nd Tuesday of the month: Aug. 10 during regular cribbage at 1:30. Introduce yourself

to the group No fee for members, guests \$2.00 per week, pay in office.

Pinochle

This card game is played Wednesday at 10:30 AM. If interested, come to the center on Wed. There is no fee for members and non-members pay \$1.00 per week.

Game Day –NEW TIME

Play Yahtzee, Dominoes, or other games. Meets 2nd & 4th Thursdays at 10:30 AM, August 12th & 26th. Prize drawing for \$5.00 to Sentry Foods compliments of Comfort Keepers. No fee for members and guests pay \$2.00 per month.



Green Felt Club

Fall League Lunch & meeting will be on Wed. Aug. 28 at NOON. Lunch will be with the Dining Site so RSVP to the Green Felt Board. **Fall league** begins on Wed. Sept. 1. Fee for Fall is Senior Center membership in good standing plus \$18.00 to the club.

Senior Singers – Community Service

Resumes Sept. 13 - This group meets on Mondays 9:30 -11:00 in the piano room. The group sings at local health centers, senior retirement homes, and more! No charge for members, guests \$1.00 per week.

Learn to Play Wii Games

Monday's in August

11:30 – 12:30 a youth volunteer will be here to help you learn the Wii (you may choose to join the league in Sept!) No fee for members and guests \$1.00 per week.

Library Project at Center

The Library arranges for books and videos to be checked out on an honor system for senior's convenience. Please keep videos 1 week or less! Thank you. *There is a sign posted for the date the Center returns the books and videos to the Library. Please return by the date listed.*

Weekly Ongoing Activities

Senior Singers (Chorus) –Resumes Sept. 13

Aqua Exercise –Tues., Thurs., Fri., at 6:40AM

Wellness Classes–Tai Chi, No Falls or Arthritis, Lift to Live, and more various days check details above.

Piano Lessons –Resume Sept 7 (Tues by appointment)

Green Felt Club – Senior 8 Ball League Wed., open play Mon & Fri. after 2:00, Sat at 9:00

Chicks with Sticks- Wed. at 1:00PM

Ceramics – Thurs. at 9:00AM

For information on class cost please call the center at 284-5821!

Card & Game Clubs

*There is **no charge for members** as your membership assists with center operations.*

Non-members & out of town participants contribute \$1.00 per week in the office!

Bridge – Tues. Ladies Bridge & Fri. at 1:00PM

Cribbage – Tues. at 1:00PM

Sheepshead – Mon & Thurs. at 1:00PM

Game Day – 2nd & 4th Thurs. at 10:30

Public Card Parties:

Canasta 1st & 3rd Mon. 7:00PM

Sheepshead – Tues. 7:00 PM

Pinochle- Wed. 10:00 AM

Clubs and Organizations Meeting

At the Center

Open 8-Ball/Greenfelt Club –Mon.-Fri. at 2:00PM (except when needed for class space) And Sat. at 9:00AM.

City Commission on Aging – 2nd Mon. at 7:00PM in the lower level

VFW – Last Wed. at 7:00PM



Special Events

Lakeside Tea Society

An English Tea

Date: Wed. August 25

A Topsy Turvey Tea with Brits featuring member Pat Conry. English scones and finger sandwiches will be served.



Registration includes the program and tea; participants must pre-register. Register by Monday, August 23. Cost: \$3.00 members, and \$5.00 for guests. *Preview September 22: India Spice Tea with Alamelu Vairavan*

Ice Cream Social sponsored by Harris Bank & the Port Rotary

Date: Thursday, Aug. 26

Pre-Register at Center by Aug. 19

Senior Center members & friends are invited to Rotary Park for a traditional ice cream social with music and door prizes on Thur. Aug. 26 from 1:00 – 3:00. There is no fee for this program only pre-registration.



Monthly Birthday Party – Sponsored by Friends of the Port Senior Center

Friday, August 27, all August birthdays will be celebrated! *This is to celebrate with members and friends your special day.* The celebration will be in conjunction with the dining site lunch. Reservations are due to Jill by noon Thurs. August 26th! Cost: Donation for lunch!



Lunch Bunch

Date: Monday, August 30

We will meet at 11:30 at the Highland House in Mequon. Join us for lunch and conversation at this monthly dining out group. Open to all members. New members welcome! Cost is on your own. Register at the Senior Center by Thursday, August 26.

National Senior Center Month: Senior Centers “Your Place to Connect... For information” Join in this special program: Five Wishes®

Date: Tues. Sept. 21 at 12:30

VITAS will present this program on documenting living will decisions about personal, emotional and spiritual needs. It is a very easy organized approach to difficult decisions. The program for adults is open to any one 18 and over. Refreshments featuring fresh cookies will be served. Registration for lunch may also be made by

Monday, Sept. 20. No fee program. Sponsored by the Port Washington Senior Center and VITAS.

Make-n-Take Greeting Card Class

Date: Wed. Sept. 29

1:30 -3:30 PM at Center

Join in the fun of making your own greeting cards for fall holidays. You may add sentiments or keep blank! Perfect way to renew your creativity. Cost is \$12.00 per member \$15.00 guest due with registration by Wed. Sept 22. **Class limit is 12.**

New

EDIBLE CREATIONS:

GET-TOGETHER WITH APPETIZERS

Date: Thursday, October 14

Time: 4:00 -6:00 PM

Get ready for the holiday season. In this class we will be putting together hot and cold items. The hot appetizers can be done well in advance and frozen. This demo and hands-on cooking class. We will be preparing Asparagus Puffs, Pepperoni Pinwheels (with variations), Thyme dip with gourmet chips and fresh vegetables and Basil Parmesan Spread. In this class individuals will be assisting in the demo. Complete printed recipes provided. Class presented by Chef Louise Block of Cuisine At Home Personal Chef Service. Sampling of all items provided.

Fee: \$24.00 per person

Min/Max 6/10

Registration and payment due Thur. Sept. 30

New

Port Washington Senior Center & Port Washington Dining Site Events:

3 – Dining Site Council

6 – Word Trivia Plus

9 – Elenore’s Prize Bingo

10 – Be an Angel Day

Blood Pressure Check

16 - Information & Assistance

18 – Happiness Day

19 – Dining Site Picnic

23- Jingo on the Farm – Prizes

27 - Birthday Party - Sponsored by Friends of the Senior Center

Community Events & Information

Kids from Wisconsin

The kids return for the 21st annual show on Tuesday, Aug. 3! Show times are 2 PM and 7 PM. Admission for the performances is \$10 for general admission, and \$5 for children 12 and under. Tickets are available at the Senior Center.

Community Cookbook

Port Washington Community cookbook is being organized by the WJ Neiderkorn Recipe Club. The Senior Center is joining in promoting this project. Pick up a submission form at the Senior Center or the library and share your favorite recipes. Let's get 50 recipes in! Deadline is Oct. 31.

Light Station Celebrates 150 Years

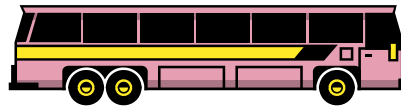
Seniors will receive free admission on the fourth Friday of the month, Aug. 27, from 1:00 – 3:00 PM. Remember, the station is also open Saturdays 11:00-4:00 & Sundays 12:00-4:00 May – mid October.

Travel Show: The Western Sun

Wed. Sept 29, Kim Hoffman from Mayflower will be her to discuss this spectacular fly/drive trip to the Southwest with a Feb. 24, 2011 departure date. Learn other travel tips and possible discounts and register for door prizes. Cost: NONE (donation for lunch if you can join us). Pre-register as space is limited by Sept. 22.

Pickle Ball (paddle game) Interest Survey

Interested in learning more about this sport, this mini-tennis game is played by 2 or 4 people on a badminton-sized court using wood paddle racquets and a plastic, poly baseball with holes. Do you already know how to play? A joint program is being reviewed with Park & Recreation to possibly start in the summer. To register for the interest list call the center. Interested in this as a volunteer opportunity? Call Catherine.



Trip News

Motor coach travel has the least emissions of plane or motor travel. Save the planet travel by bus with us!

Trip Payment & Refund Policy: Prices are quoted for center members: guests add \$4.00 for day trips or as quoted for a specific trip as a non-member price. Sign up is on or after the call in day listed with each trip. You must register in advance and pay by the deadline or your name may be dropped from the list!

Cancellations are not guaranteed a refund. Cancellations within THREE weeks will be refunded only if someone fills the opening! There are trips we reserve the right to advertise which are sponsored by travel agencies. It is for your convenience that we advertise them. All other information is handled by the agency.
Contact the office regarding any special needs you have.

WHEN LEAVING ON A DAY TRIP PLEASE PARK YOUR CAR IN THE SECOND & THIRD SET OF PARKING ROWS. THANK YOU!

**Fond du Lac and Fin & Feather Showboat
Date: Tues. Aug. 17**

Payment due with registration

An exciting day of adventure is ahead as we stop at the Octagon House in Fond du lac before heading to lunch featuring an all-you-can-eat-buffet aboard the Fin & Feather with a scenic cruise on the Wolf River. Detail flyer at Center. **Cost:** \$87 for members or \$90 for guests. Includes deluxe motor coach, admissions, lunch, and gratuities.

Arlington Race Track

Date: August 26, 2010

Registration open – NEED 4

Payment and entrée selection due.

Enjoy the ultimate in Thoroughbred racing! Tour includes: escort, motor coach, track admission, program, reserved covered seating, luncheon at the Olive Garden. Lunch includes entrée choice, salad,



New

breadsticks, beverage and dessert.

Luncheon choices: Lasagna Classico, Spaghetti & Meatballs, Eggplant Parmigiana, Fettuccine Alfredo, or Ravioli di Portobello. Depart Port Senior Center at 7:30 AM. Cost: \$65 per member or guest!

Show Me the Money

Date: Thur. Sept. 16

Registration Open – only 10 seats

Payment deadline Aug. 9.

Fascinating tour gives an inside look at money. How it is made, lost, and where it comes from. Visit the **Chicago Board of Trade, Federal Reserve Bank**, and have a special lunch at the Cooking School. Pick up detailed flyer at the Center. **Cost:** \$79.00 per person.

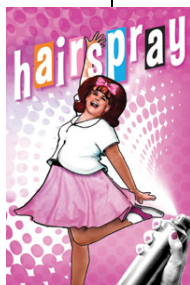


Fireside Presents: Hairspray

Date: Thur. Sept. 23 – 10 seats

Payment due August 4

This show was a smash Broadway hit. It's 1962 and in the city of Baltimore young Tracy Turnblad, a big girl with big hair and an even bigger heart, has only one passion – to dance. When she wins a spot on a popular TV dance show she is transformed from outsider to teen celebrity. But can she win the love of handsome Link Larkin and defeat the evil plans of teen princess Amber Von Tussle? **Menu: Garden Salad,** Freshly Baked Breads from The Fireside Ovens; **Chicken Piccata**, served with Grilled Asiago Polenta topped with Marinara Sauce, Snap Peas and Carrots. Dessert is **Southern Pecan Pie and** Coffee, Tea or Milk. **Cost:** \$83.00 member and \$85.00 guest includes deluxe motor coach, dinner, show, gratuities, and escort! Depart Port at 8:15 am.



Holy Hill and Horicon Marsh

Date: Wednesday, October 13, 2010

Registration open – 12 seats

Payment deadline is September 15

Be inspired by the peace and beauty of Holy Hill in its autumn splendor, enjoy a family style luncheon at Ginger's Hideaway, and

then enjoy a boat tour of Horicon Marsh and view flocks of migratory geese. Cost is \$69 for members and \$73.00 for guests.

Christmas in the Country

Date: Tuesday, Dec. 7, 2010

Registration open

Luncheon and a holiday revue "Hooray for the Holidays" at the Grand Geneva Resort, followed by tea and time to browse the unique shops. Upon departure we will drive through the brilliant light show created by over 500,000 lights throughout the grounds. Cost: \$89 per person which includes escort, motor coach, lunch and all admissions. Payment is due by November 1, 2010.

New

The Child –The Story of the First Christmas at the Fireside

Date: Thurs. Nov. 18

Registration open

A Fireside Christmas featuring the World Premier of a Brand New Musical – THE CHILD. This season marks the return of The Fireside's wildly popular musical revue format in this unique and special Christmas offering. Act One of our show is A FIRESIDE CHRISTMAS – the name that our patrons, young and old, have come to know and love from 16 years of new and different Christmas revues. It's all there again – the beautiful gowns, the colorful costumes, the breathtaking dances, and the exciting medleys of beloved Christmas songs in a fast-paced, jolly, delightful potpourri of holiday cheer. In Act Two of this unforgettable Christmas show we are proud to present the world premiere of a brand new musical by the creators of THE ROCK AND THE RABBI and THE WITNESSES entitled THE CHILD. Through a wonderful combination of intimate storytelling and acoustic music, you'll experience the first Christmas. Written especially for The Fireside this new show allows us to see the birth of "The Child" through the eyes of Joseph, Mary's husband. All new parents are full of feelings of wonder and inadequacy . . . and Joseph and Mary were no exception.

New

Cost: \$83.00 member and \$85.00 guest includes deluxe motor coach, dinner, show, gratuities, and escort! Depart Port at 8:00 am. Payment due October 7, 2010

Fox River Mall Shopping Appleton

Date: Mon. November 22

Registration now open

We will again be shopping until you drop at the Mall in Appleton. The Cost for members is \$24.00 and \$26.00 for guests for a deluxe motor coach bus, snacks, and beverage. Door prizes will be drawn on the bus. Depart Port at 8:30 AM. Return approx. 6:00 PM. Payment due Oct. 28.

New

The Child at the Fireside

The Story of the First Christmas

Date: Wed. Dec. 15

Registration open

Cost: \$83.00 member and \$85.00 guest includes deluxe motor coach, dinner, show, gratuities, and escort! Depart Port at 8:00 am. Payment due Nov. 1, 2010

Oneida Bingo & Casino Trips

New rates in effect July 1: Cost \$28.00 per person with casino rebate \$25.00

Next dates: Aug. 5 & 26 with the 2010

Yearly schedule available at Center.

Landmark Tours provides this trip several times a month. Call 375-1426 to register.

2010 Extended Trips with Cedarburg & Grafton

Celebration Belle Cruise

October 28th—29th

The Senior Center is proud to offer this wonderful journey back in time. It features an afternoon aboard the riverboat

“Celebration” with their famous shows.

Listen or dance as we float along the mighty Mississippi aboard the largest riverboat on the river. **COST: \$169 per person (based on double occupancy) \$209 single**

INCLUDES: Deluxe Motorcoach Transportation with escort, movies, games and fun. Accommodations for 1 Night at the Isle of Capri ; Afternoon Cruise with Entertainment aboard the Celebration with



Lunch Buffet and More; \$10 in Promo Cash on 1st Night & ½ off Dinner at Isle of Capri Breakfast Buffet at the Isle of Capri \$5 in Promo Cash at Rhythm City plus Lunch; Does not include gratuity for driver or escort. **Deposit of \$69.00 per person due by July 1, 2010, non-refundable after July 22, with balance due as a final payment by Sept. 17.**

2011 Fireside trips:

Jan 20 – Swing on a Star March 3 – Annie

May 12 – Closer Walk with Patsy Cline

July 14 – David Sept. 7 Seven Brides/ 7

Brothers Nov. 10 & Dec. 14 Christmas

2011 Extended

Feb. 24 Western Sun

Center Operations & Procedures

We encourage our members who **may need** special assistance to register for events, programs, and trips **with a friend, family or caregiver to provide the assistance** they may need. Due to the limit of staff, the Center can not provide one-on-one assistance during the event, class, or trip. Please register with staff so we can be aware of individual needs.

Membership- Annual membership is paid January to December. **Individual fee is \$15.00 and Couple \$20.00** for City and Town of Port Residents. Out of town individuals may subscribe to the newsletter for \$10.00 per year or to receive membership the fee is \$1.00 per week or \$62.00 per year, it includes the newsletter and may be paid quarterly. **Value of membership in the Center** offers you a place to read the Journal Sentinel, Ozaukee Press, News Graphic, & a variety of magazines including Reader’s Digest, Outdoor Living, Good Housekeeping, Family Fun, & more saving you money on subscriptions!

Recyclables – There is a container on both levels for aluminum cans. The can should be rinsed then deposited in the container. Clean cans are preferred for recycling. Thanks to all who help.

Welcome New Members

We look forward to seeing you at the Center! Stop in and reintroduce yourself or use your free coupon for lunch!

Monthly Birthday Party –Friday, Aug. 27

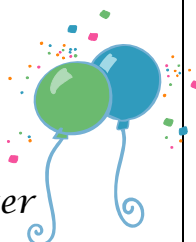
Sponsored by Friends of the Port Senior Center

Friday, August 27, all August birthdays will be celebrated! Reservations are due in to Jill by noon Thursday, August 26!

Cost: Lunch Donation.

HAPPY BIRTHDAY

- 1 Joe Millonzi
- 2 Linda Ross, Lucille Wester
- 3 Diane Miller
- 4 Robert Tetley
- 7 Pat Neitz, Marilyn Schmit
Clyde Weiland, Aileen Wiltgen
- 9 Gloria Rasbornick
- 10 Emily Keelty
- 11 Paul Ehrlich, James Heiser
Beverly Travis
- 12 Lillian Rebstock
- 15 Pat Krainz
- 16 Douglas Ahsmann, Ken Hoard
Carol Heinen, Spyros Heniadis,
Margaret M. Prom
- 19 Lillian Haseley
- 20 Mary Neerhof
- 21 Virginia Maechtle, Paul Taylor
Laura Stricker, Santo Mirasola
- 22 Donna Riemer, Elaine Nulph
- 23 Randy Kasten
- 25 Betty Bley, Chuck Norman,
Ruth Primas
- 27 Jan Glenn
- 28 Marjorie Adams
- 29 Joan Bieber
- 30 John Windis, Austin Goodrich
- 31 Jacqueline Homan



Miscellaneous

Friends of the Port Washington Senior Center
Membership dues are separate from the Center. The Friends brochure highlights the various levels from Basic \$25.00 per year; Associate at \$75.00 per year; Partner at \$250.00 which is every 5 years; and Life Circle Membership at \$3,000 which is a one time payment. It is for couples so an individual would be at \$2,000 lifetime. **Board Members** are: Ann Augustine, Harold Johnson, & Dick Stoughton

There is the opportunity to designate charitable bequest or one time donations. Pick up a brochure at the Center if interested

Lost & Found

A pair of wire rimmed sunglasses was found on the lower level on May 18th. Please claim them in the office if they belong to you.

Congratulations

Member Adeline Schmitz shot a hole in one on #17 during Hawthorne Honeys golf league on Wed. July 14! Wow, look out senior LPGA!



Bonnie making a crisp to go with a salad.



Painting the wine glass candle holder at Oz Senior Conference