



# Port Washington Senior Center

## The Leisure Times

### January 2010



Port Washington Senior Center  
 102 East Pier Street  
 (262) 284-5821

Catherine Kiener, Director  
 Sharon Brown, Assistant  
 Kandy Bichler, Environment

E-mail: [ckiener@ci.port-washington.wi.us](mailto:ckiener@ci.port-washington.wi.us)

**Center Office Hours: Monday – Thursday 8:30AM – 4:00PM  
 Friday 8:30AM- 2:00PM**

**Mission: To promote healthy aging by providing cost effective programs, classes, activities and services to citizens 55 years and better. Adopted April 10, 2002**

#### Director's Report

As the New Year begins, the staff wishes each of you a happy, healthy, and active year especially at the Senior Center. As Orison Marsden, American founder of Success Magazine said, "Our thoughts and imaginations are the only real limits to our possibilities"! I challenge each member to come to lunch once a month, try a new activity, or attend a physical activity class.

Sincere appreciation is extended to the members who donated for the craft & bake corner. Over \$1,200 was raised plus the matching gift gives us about \$2,000 for the fundraiser. Thank you to the members who referred friends and family or supported the event with purchases!

**Please welcome our new assistant,** Sharon Brown, to the Center staff. Sharon is also a member and is active in a variety of programs. She has started orientation and will be working varied hours based on Center programs and office needs.

As we enter 2010 the Center will be looking into the security of the Center storage areas due to missing products from upstairs janitor closet (increasing in frequency), a broken mirror in downstairs bathroom, and missing door screws. The group leaders and volunteers have access to group storage areas and they are aware of the areas. Please respect the staff and membership by not removing items without office approval. Membership renewal for 2010 is underway.

#### UPCOMING EVENTS:

- **Membership renewal by Dec. 31**
- **Eye Care Wed. Jan. 13**
- **Day Trip Preview Thur. Jan 14**
- **January Birthday Party Fri. Jan. 29**

#### Dear Members of the Senior Center,

I had a wonderful time here at the senior center getting to know everyone. Thank you to all the volunteers who were very helpful to me in the office. Thank you, Catherine, for the opportunity to be the intern at the Senior Center. Merry Christmas Everyone!  
 Renee Hanson

#### Holiday Prize Winners

Congratulations to the prize winners! Pre-Season Packer Tickets: Debbie Krebs  
 Handmade Afghan: Marge Erlauer  
 Knitting Bag: Karen Baker  
 Home for the Holidays Basket: Barb Swietlik  
 Sharbuno Jewelers Gift Cert.: Ruth Lorge

#### Winter Weather Closings

The Senior Center will close during severe weather such as a blizzard. Fox 6 is the Center's official station for notice.

#### Holiday Closings

The Senior Center & Dining Site are closed Fri. Jan. 1

#### Sentry Receipts

Fourth quarter receipts 2009 are from Oct. 1 – December 31, 2009. DUE no later than Mon. Jan. 4, 2010.

### **Pick-n-Save We Care Program**

Our first check was received for \$53.53 in December. Thank you for using our number. *If you shop at Pick-n-Save* choose Port Senior Center as a recipient of the Community dollar program. **The number is 620450!** Customer service can help you add this to your card.

### **Thank You, Thank You**

**Craft & Bake Corner:** Ozaukee County Thrivent Financial for Lutherans sponsor, all the member donations & all the SHOPPERS!  
**Paper donations:** Thank you to those who remembered a paper product donation for the center. We received: 6 single paper items and 3 multi-packs.

### **December Newsletter Crew:**

Aileen Wiltgen, Ethelyne Schumacher, Joan Murphy, Michele Schmitz, John Schmitz, Betty Last, Joan Hansen, Sharon Brown, and Rosemary Weiland.

### **Volunteer Opportunities**

*“One person can make a difference and every person must try.” – John F. Kennedy*

**Office Volunteer Assistants-** Regular & on-call volunteers are needed. Contact Catherine if you would like to help answer phones, record memberships & payments, etc.

### **Donations, Gifts or Memorial**

*You can make the Port Senior Center a recipient of a gift, any time of the year.*

The Friends of the Port Washington Senior Center is a 501-C organization which can accept your charitable gifts now or designated for the future. To join, pick up an application at the Senior Center.

### **Programs & Classes for Healthy Living**

#### **Aqua Exercise Class**

One class is held on Tuesday, Thursday, and Friday at 6:40 AM. Cost is \$6.00 for member and \$10.00 for non-member per month. Class is held at the District Aquatic Center TJ School on Holden St. You do not need to get your hair wet, bring a towel &

suit, and increase your flexibility. Register monthly at the Center or 284-5821.

### **No Falls Exercise Course**

**Date: Monday & Wednesdays**

**Jan 4-April 28**

A combination of strength, balance, vision and flexibility exercises designed to reduce the number of falls in older adults. Studies have shown that when these components are taught independently of each other there is not significant reduction in falls, but if they are taught together in combination, studies have shown a 15-32% reduction of falls. Although there is no way to guaranty that you will never fall, being stronger and more aware of how to react to certain situations helps to reduce the risks related to these types of accidents. The new class is 15-weeks and will begin on Monday Jan. 4, 2010 at 9:45 at the park and rec building. The fee is \$60.00 for members with a one-time \$15.00 equipment fee. Non-members \$65.00 with one time fee of \$15.00 per person.

### **Silver Strikers Wii Bowling League**

Final results for the November 09 League

<b>Team</b>	<b>Total Pins</b>
Bucky B	1919
Alley Oops	1590
Paddy	1564

Congratulations to the participants.

**New league is forming for 2010.** They will be meeting at 9:30 on Tuesday mornings. If you are interested, call the Senior Center by January 5<sup>th</sup> to register. Fee is \$5.00 per couple for members and \$10.00 for guests.

### **Strong Women Program Jan 2010**

**Dates: Tues & Thurs Jan 5, 2010-Mar 25**

Developed by Miriam Nelson, PhD, at Tufts University, the Strong Women Program is based upon research demonstrating that strength is critical to living healthier, active lives. It is beneficial to both sedentary and active women. This 12-week exercise program for women 40 and older will be offered Tues. & Thurs. mornings 9:30 – 10:30 AM at the Park and Rec Office Jan. 5, 2010.

**New**

The cost will be \$50.00 per member and \$55.00 per guest plus equipment. A Physician release form must be completed for all new participants or present members with physical or health changes.  
Class size: minimum 8 max. 15 -6 Open

### **Tai Chi Beginners Course New Session**

**Dates: Mondays Jan 4-March 22**

KT Rusch will teach this 12-week course. Tai Chi promotes balance, flexibility, & good overall health. Meets lower level of Senior Center. Class fee \$95.00 per member and \$105.00 guest. Register with fee by Dec29. Class minimum: 4 Maximum 12

### **Tai Chi continuing Form taught by KT**

**Dates: Mondays Jan 4 – March 22**

New 12- week session. 10:00 AM lower level of senior Center. Class fee \$95.00 per member and \$105.00 per guest. Register with fee before start of class.

Class minimum: 4 Maximum 15

### **Hatha Yoga**

**Registration open to 12 and older**

**Dates: Saturdays Jan. 16– Feb 27, 2010**

Bruce Van Dyke returns to teach this level 1 Yoga course. He is certified. He has been on PBS and students look forward to his classes. Meets at TJ School Library at 9:15AM. Cost \$55.00 member \$60.00 guest due with registration by Jan. 11, 2010. Min. 7 students max. 25. Sponsored by the Senior Center.

### **Friday Book Talk**

Friday, January 8<sup>th</sup>, 2010. The group will be meeting at 9:30 AM at Niederkorn library to choose the books for the rest of the year. Come and let us know what books you would like to discuss.

### **Ceramic Pottery- ALL Skill Levels**

*New greenware pieces just in time for craft sale which helps support this class!*

Meets Thursday mornings from 9:00 – 11:00 the fee is \$2.00 per week for members plus glaze, firing, and greenware piece! Non-member fee is \$4.00 per week plus supplies.

Ceramic instructor will be present on the 1<sup>st</sup>, 3<sup>rd</sup> and 5<sup>th</sup> Thursdays of the month.



### **Chicks with Sticks**

Meets Wednesday at 1:00 at the Center.

Come share your patterns and ideas. Non-member fee is \$1.00 per week.

### **Oil Painting Session I**

**Dates: Wednesdays Jan 13 – Feb 17, 2010**

Laurie Sucharda will lead beginning oil painting with topics discussed, a painting to be complete at end of session. Class will meet 3:00 – 5:00 PM at the Center. Cost: \$50.00 for members & \$60.00 for guests. New painters welcome at any time.

*New*

### **Beginning Computer Workshop**

**Date: Tuesdays Jan 5 & 12**

This will be 1 ½ hour class each week 3:00 - 4:30 for beginners as an introduction to internet & e-mail and will be tailored to class abilities. Cost is \$10.00 per member & \$15.00 a guest. Maximum 4 students!

### **Computer Lab Time –ON YOUR OWN**

Tuesdays from 9:00 -11:00 the lab will be open for basic computer skill practice on your own. Please register in the office by Monday. Maximum: 2-3 per hour. Cost: \$1.00 for members and \$3.00 per guest.

### **Canasta or “Hand and Foot”**

Players meet at 7:00 PM on the 1<sup>st</sup> & 3<sup>rd</sup> Monday: Jan. 4<sup>th</sup> and 18th. Everyone is welcome! **Non-member fee is \$1.00 per week.**

### **Learn to play Cribbage**

Hands on cribbage learning sessions the 2<sup>nd</sup> Tuesday of the month – Jan 12th during regular cribbage 1:30. Introduce yourself at the group No fee for members, guests \$2.00 per week, pay in office.

### **Pinochle**

This card game is played Wednesday at 10:30 AM. If interested, come to the center on Wed. There is no fee for members and non-members pay \$1.00 per week.





### Game Day

Meets 2<sup>nd</sup> Thursday at 12:30 PM!. Jan 14 & 28. Prize drawing for \$5.00 to Marcus Cinemas thanks to Comfort Keepers. No fee for members and guests pay \$3.00 per month.

### Green Felt Club

The GFC committee is asking that each member please mark their calendars and make the extra effort to be a part of these events, which help support the operation of your Senior Center.

December 30 -Mid-Season luncheon  
March 31, 2010 – Summer league sign up

### Senior Singers – Community Service

This group will begin meeting again in February on Mondays 9:30 -11:00 in the piano room. This group sings at local health centers, senior retirement homes, and more! No charge for members!



### Library Project at Center

The Library arranges for books and videos to be checked out on an honor system for senior's convenience. Please keep videos 1 week or less! Thank you. *There is a sign posted for the date the Center returns the books and videos to the Library. Please return by this date. Missing VHS video The Quiet Man, and 20,000 Leagues Under the Sea.*

*Missing Items*

### Monday at the Movies – January 25 New In Town



Lucy Hill (Renée Zellweger) is an ambitious, up and coming executive living in Miami. She loves her shoes, she loves her cars and she loves climbing the corporate ladder. When she is offered a temporary assignment - in the middle of nowhere - to restructure a manufacturing plant, she jumps at the opportunity, knowing that a big promotion is close at hand. What begins as a straight forward job assignment becomes a life changing experience as Lucy discovers greater meaning in her life and most unexpectedly, the man of her dreams (Harry

Connick, Jr.). Lunch reservation is due in by Fri. Jan 15.

### Weekly Ongoing Activities

**Senior Singers** (Chorus)-Mon. 9:30-11:00

**Aqua Exercise** -Tues., Thurs., Fri., at 6:40AM

**No Falls Exercise** – Mon & Wed 9:30 at Parks and Recreation office

**Piano Lessons** –Tues by appointment

**Green Felt Club** – Senior 8 Ball League Wed., open play Mon & Fri. after 2:00, Sat at 9:00

**Chicks with Sticks**- Wed. at 1:00PM

**Ceramics** - Thurs. at 9:00AM

For information on class cost please call the center at 284-5821!

### Card & Game Clubs

*There is no charge for members as your membership assists with center operations.*

Non-members & out of town participants contribute \$1.00 per week in the office!

Bridge - Tues. Ladies Bridge & Fri. at 1:00PM

Cribbage - Tues. at 1:00PM

Sheepshead - Thurs. at 1:00PM

Game Day – 2<sup>nd</sup> & 4<sup>th</sup> Thurs. at 10:30

### Public Card Parties:

Canasta 1st & 3rd Mon. 7:00PM

Sheepshead - Tues. 7:00 PM

Pinochle- Wed. 10:00 AM



### Clubs and Organizations Meeting

#### At the Center

Open 8-Ball/Greenfelt Club –Mon.-Fri. at 2:00PM (except when needed for class space)

And Sat. at 9:00AM.

City Commission on Aging - 2nd Mon. at 7:00PM in the lower level

VFW - Last Wed. at 7:00PM

### Special Events

#### Lakeside Tea Society

#### Literary Tea

**Date: Wed. Jan 20**

Guest speaker is Laura Schaefer, author of **Tea Shop Girls**. Cost will be \$3.00 members and \$5.00 for guests. Register by Monday, January 18<sup>th</sup>. *Next Date: Feb. 17*



## Recipe from the November tea

### Corn Soup

1 bag dehydrated corn or 4 cans white hominy  
2 cans of red kidney beans  
2 lb pork hocks  
Simmer for 3 hours.  
Add salt and pepper to taste  
Refrigerate and eat the next day.  
Enjoy!

### Monthly Birthday Party – Sponsored by Friends of the Port Senior Center

Friday, January 29th, all January birthdays will be celebrated! The Friends of the Senior Center provide a homemade dessert for monthly birthday party celebrations at the senior dining lunch. *This is to celebrate with members and friends your special day.* The celebration will be in conjunction with the dining site lunch. Reservations are due to Jill by noon Thurs., Jan. 28th! Cost: Donation for lunch!



### Lunch Bunch returns in 2010!

We will meet at 11:30 on Thurs. Jan. 28 at Newport Shores. Join us for lunch and conversation at this monthly dining out group. Cost is on your own. Register at the Senior Center by Mon. Jan. 25, 2010. *Preview for February: Beanie's in Port*

### Port Washington Senior Center & Port Washington Dining Site Events:

4 - Music - Bob Ropiak  
11 - Elenor's Money Bingo  
13 - Eye Care Presentation  
14 - Game Day  
18- Information & Assistance Ozaukee Aging and Disability Resource Center Staff Laura is here from 11:00-1:00 to meet with you.  
25 - Lunch & a Movie - *New in Town*  
28 - Game Day  
29 - January Birthday Party

## Community Events & Information

### Hatha Yoga

See page 3 for details

### Ballroom Dance

Interested in learning 2 dances over 6 weeks? Contact the Center to be on the list when a class is formed. Estimated date is February. The cost is to be determined.

### What you may not know about your Medicare Benefit...

**Date: March 3 at 12:30**

Your Medicare benefit covers the services of Home Health and Hospice. We invite you to find out how these services can help you or someone you care about. Make a lunch reservation by Tues. March 2. To reserve a seat for the presentation call the Center by Tues. March 2.

### Eye Care Update

Date: Wed. Jan 13, 2010 12:30 PM

Dr. Cueto from Lakeshore Eye Care Professionals will be here to speak on dry eye syndrome, common in the winter, overview of glaucoma & macular degeneration. Sign up in the office by Mon. Jan. 11 or with Jill for lunch by Tues. Jan 12, 2010.

### Roadwise Review Online

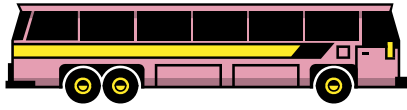
This is a **FREE** screening tool developed by [AAA](http://AAA) to help seniors measure certain mental and physical abilities important for safe driving. In as little as 30 minutes, you can identify and get further guidance on the physical and mental skills that need improvement. Go to [www.seniordrivers.org](http://www.seniordrivers.org) for more information.

### Port Washington High School Gold Cards

Seniors are eligible for a gold card that allows free access to high school plays and sporting events. Stop in the District office to fill out an application!

### 2010 Classes to watch for:

Cooking classes will return in April featuring Louise Block.



## Trip News

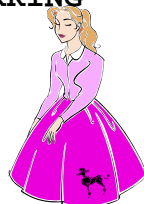
*Motor coach travel has the least emissions of plane or motor travel. Save the planet travel by bus with us!*

**Trip Payment & Refund Policy: Prices are quoted for center members: guests add \$4.00 for day trips or as quoted for a specific trip as a non-member price. Sign up is on or after the call in day listed with each trip. You must register in advance and pay by the deadline or your name may be dropped from the list!**

***Cancellations are not guaranteed a refund. Cancellations within **THREE** weeks will be refunded only if someone fills the opening! There are trips we reserve the right to advertise which are sponsored by travel agencies. It is for your convenience that we advertise them. All other information is handled by the agency. Contact the office regarding any special needs you have.***

**WHEN LEAVING ON A DAY TRIP PLEASE PARK YOUR CAR IN THE SECOND & THIRD SET OF PARKING ROWS. THANK YOU!**

**Those Fabulous 50's & 60's  
Fireside Thurs. January 21, 2010  
Registration open – 4 seats open  
Payment due with registration by Jan 6.**



Audiences' young and old have loved our live band revues. This season not only do we revisit the great music and dancing of the 1950s but we continue our musical journey into perhaps the most creative period in our Nation's history – the sizzling 60s! This is an unforgettable bonanza of music, dancing, and laughter – jam-packed with the 50s sounds of such greats as Elvis Presley, Jerry Lee Lewis, Buddy Holly, Bobby Darin, Rosemary Clooney, Dave Brubeck, The Platters, Little Richard, as well as the 60s sounds of The Beatles, The Beach Boys, Patsy Cline, Simon and Garfunkel, Blood, Sweat, and Tears, The Rolling Stones, Bob Dylan and much, much, much more. **MENU: Southwest Santa Fe Bean Soup, Freshly Baked Breads** from The

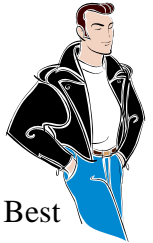
Fireside Ovens, **Chicken Waterford**  
Dessert is **Strawberry Lemon Torte.**

Coffee, Tea or Milk Cost: \$83.00 member and \$85.00 guest includes deluxe motor coach, dinner, show, gratuities, and escort! Depart at 8:00 AM.

**GREASE AT THE Marcus Center  
Date: Tuesday, February 23, 2010  
Registration open -18 seats open**

Starring: American Idol Season 5 winner  
**Taylor Hicks** as Teen Angel!

Nominated for 2008 Tony Award for the Best Revival of a Musical. GREASE, Time Magazine's 2007 pick for "#1 musical of the year, "is rockin' across the country in this new production direct from Broadway.



**New**

Take a trip to a simpler time of poodle skirts, drive-ins and T-birds. "Bad boy" Danny and "the girl next door" Sandy fall in love all over again to the tune of your favorite songs: "Summer Nights," "Greased Lightning" and "We Go Together" as well as additional songs from the hit movie "Grease," "Hopelessly Devoted To You" and "You're the One That I Want."

Depart Port Washington Senior Center at 6:00 p.m. Showtime is at 7:30 p.m.

Cost: \$73.00 includes deluxe motor coach, Great Center Loge Seats rows F-H, escort and gratuities. Tickets are limited.

**Payment due: Monday,  
January 18, 2010.  
Dead Sea Scrolls: Ancient  
Artifacts & Modern Sights  
Date: Tues. March 9, 2010  
Registration now open**



Start at the Milwaukee Public Museum, for the largest temporary exhibit produced by the MPM, for the touring exhibit on the Dead sea scrolls. Lunch will be at Saz's State House with a choice of roast pork loin or lasagna (meat or veggie). The day is topped off with a tour of the Great Lakes Distillery, the only one open since the prohibition! Learn how and why they make them. Cost is \$75.00 per member and \$78.00 guest. Includes motor coach, lunch, escort, gratuities. Payment due

**New**

Feb 1. Depart at 8:00 AM, return approx. 4:30 PM.

**Joseph & The Amazing Technicolor Dreamcoat at the Fireside -15 seats open**  
**Date: Thur. March 25**

**Registration opens Mon. Nov. 30**

One of the most popular musicals in the last 50 years! This telling of the biblical story of Joseph and his brothers is filled with great music, costumes, laughter, and heart with many different styles of music.

Cost: \$83.00 member and \$85.00 guest includes deluxe motor coach, dinner, show, gratuities, and escort! Depart Port at 8:00 AM. Payment due Feb. 8, 2010.

**GREAT TASTES OF CHICAGO**

**Date: Tuesday, April 6, 2010**

**Registration open – 12 seats open**

Experience the culinary delights of Chicago, as diverse as the city

itself. Join us as we experience a behind the scenes look at this fascinating and delicious world, from creation to consumption. Trip includes visits to an ethnic bakery, Italian deli, gourmet lunch at a culinary school, spice shop, chocolate shop, and grocery emporium. Cost: \$85 members, \$87 guest includes motorcoach transportation, tastings, luncheon, gratuities, and escort. Detail flyer at senior center. Payment due March 1, 2010.



**Cinderella at the Fireside**

**Date: Thur. May 6, 2010**

**Registration opens Jan. 4, 2010**

Whether you are 8 or 80 you will be captivated by its humore, romance, beauty and great, great music. Rogers & Hammerstein's first of its kind written to be performed on live television in 1957. The menu includes a pasta deli salad, with fresh baked breads, chicken & ribs, with pumpkin ginger caramel flan for dessert. Depart Port at 8:15 AM. Cost: \$83.00 member and \$85.00 guest includes deluxe motor coach, dinner, show, gratuities, and escort! Payment due March 25, 2010.

*New*

**Musical Railroads**

**Tues. June 22, 2010**

**Registration begins Mon. Jan. 4**

Featuring the Wisconsin Opry and the mid-continent railway this is a delightful summer day in Central Wisconsin. Step back in time to the golden age of travel by rail with an hour long ride in the scenic Baraboo river valley. Afterwards, a short journey by bus we will have a home cooked meal with all the fixins followed by a special blend of country, bluegrass and gospel music that is the Wisconsin Opry! Depart Port at 7:00 AM. Cost: \$84.00 per member and \$87.00 guest. Includes deluxe motor coach, admission tickets, lunch, and gratuity with an escort. Payment due Friday, May 21.



*New*

**2010 Day Trips**

**Fireside**

Thur. July 8 – Ring of Fire

Thur. Sept 23 – Fireside Mystery Musical

Thur. Nov. 18 & Dec 15– Fireside Christmas

**General Trips**

May – Brewers Trip

Summer Boat Trip

Shopping in Nov and Christmas show Dec.

Planning is still occurring for 2010 trips!

Watch newsletter for more information the next several months!

**2010 Extended Trips with**

**Cedarburg & Grafton**

**2010 Mayflower Value Tour: Myrtle Beach**

**Melodies April 24, 2010**

8 days, 12 Meals, 3 fantastic shows, Free

home pick up, professional Tour Manager,

deluxe motor coach, \$40.00 Mayflower

money. This trip departs April 24, 2010.

Price is 1,029 per person double; single add

\$329.00. Reserve direct with Mayflower and

a \$210.00 deposit with cancellation Fee

Waiver. Pick up a color flyer at Center for

details!

**Center Operations & Procedures**

We encourage our members who **may need** special assistance to register for events, programs,

and trips **with a friend, family or caregiver to provide the assistance** they may need. Due to the limit of staff, the Center can not provide one-on-one assistance during the event, class, or trip. Please register with staff so we can be aware of individual needs.

**Membership-** Annual membership is paid January to December. **Individual fee is \$15.00 and Couple \$20.00** for City and Town of Port Residents. Out of town individuals may subscribe to the newsletter for \$10.00 per year or to receive membership the fee is \$1.00 per week or \$62.00 per year, it includes the newsletter and may be paid quarterly. **Value of membership in the Center** offers you a place to read the Journal Sentinel, Ozaukee Press, News Graphic, & a variety of magazines including Reader's Digest, Outdoor Living, Good Housekeeping, Family Fun, & more saving you money on subscriptions!

**Recyclables** – There is a container on both levels for aluminum cans. The can should be rinsed then deposited in the container. Clean cans are preferred for recycling. Thanks to all who help.

**Monthly Birthday Party – January**  
*Sponsored by Friends of the Port Senior Center*  
 Friday, January 29, all December birthdays will be celebrated! Reservations are due in to Jill by noon Thursday, Jan. 28! Cost: Lunch Donation.



## HAPPY BIRTHDAY

- 1 Joan Keller, Arthur Senn
- 2 Harold Matthews, Patricia Gibes  
Dennis McGuire, Shirley Parlow
- 3 Rita Knap
- 5 Mary Jo Bruecher
- 6 Joan Hess
- 7 Eleanor Griksas
- 8 Joanna Eckert,  
Harriet Augustin,  
Betty Schowalter
- 9 Marion Matthews, Peter Jushka  
Jennie Greisch
- 10 Charles Schmit, Meg Adams
- 12 Ruth Heiser, Richard Webb



- 13 Marion Schmit
- 15 Betty Lanser, Carol Rheingans,  
Fred Michalowski
- 16 Maxine Bartelt, Nancy Prom
- 17 Betty Wengel,  
Rosemary Linzmeyer,  
Gerald Downing
- 18 Marion Hurias,  
Rhea Yovanovich
- 19 Agnes Morgan, Betty Savage
- 20 Janice Salchert
- 22 Helen Nenn, Lorna Ruppel
- 23 Audrey Cayo
- 24 Mary Donna Froh
- 25 Ethelyne Schumacher
- 27 Herbert Possley
- 28 Mildred Prom
- 29 Frances Thunander
- 30 Rose Gross
- 31 Herbert Russo

### In Memoriam

Our thoughts and prayers are with the families of: Bernice Beer

### Miscellaneous

**Friends of the Port Washington Senior Center**  
 One project of the intern, Renee, was to prepare a mass mailing to the community age 60 and over explaining the Friends. The Senior Centers members were to be removed as you receive the information in the newsletter. The intent is to increase awareness of the charitable giving to the Friends group for people interested in improving the quality of life for Port senior citizens.

**Board Members** are: Ann Augustine, Harold Johnson, & Dick Stoughton

### Acronym translation

**AARP:** "Active Adults Ready to Party"