

# Port Washington Senior Center Celebrating National Senior Center Month The Leisure Times September 2010



Port Washington Senior Center  
102 East Pier Street  
(262) 284-5821

E-mail: [ckiener@ci.port-washington.wi.us](mailto:ckiener@ci.port-washington.wi.us)

Catherine Kiener, Director  
Sharon Brown, Assistant  
Environment

Center Office Hours: Monday – Thursday 8:30AM – 4:00PM  
Friday 8:30AM- 2:00PM

Mission: To promote healthy aging by providing cost effective programs, classes, activities and services to citizens 55 years and better. Adopted April 10, 2002

## Director's Report

September is recognized as National Senior Center Month "Your Place to Connect" to stay active, healthy, build new skills, and make new friends. Several events are being planned to celebrate invite a friend, neighbor, or Alderman to join in one of the events.

**Monday, Sept. 20 at Saukville Dairy Queen from 4:00 – 7:00 PM a portion of all products sold will go to the Senior Center & Friends of the Senior Center** for unfunded programs. Take yourself and tell your friends to celebrate senior center month & the end of summer with a DQ Treat.

September begins our annual membership recruitment. New members joining will receive 4 months of 2010 free when joining for 2011! **All members will fill out a new membership card for 2011.**

*Out of town membership will be changed for 2011 to have individual & couple.*

## UPCOMING EVENTS:

- *Mon. Sept. 20 Dairy Queen purchases fundraiser*
- **Senior Center Month with Lottery Lunch days Sept. 2,8,14,20, & 24**
- **VITAS program on Five Wishes Sept. 21 at 12:30**
- **2011 Extended Travel Fly/Drive Opportunity Show Wed. Sept 29**
- **Day Trips with Seats Available in Sept., Oct., Nov., and Dec.!**

## Sentry Receipts

Third quarter receipts for July 1 – September 30, 2010 due October 1<sup>st</sup>. Drop them off any time in the can by the sign in sheet on either level.

## Pick-n-Save We Care Program

*If you shop at Pick-n-Save* choose Port Senior Center as a recipient of the Community dollar program. **The number is 620450!** Customer service can help you add this to your card. Thank you for helping!

**Holiday Closing Monday, Sept. 6, 2010 Senior Center & Dining Site** are closed for Labor Day.

## Thank You, Thank You

**Kudos:** Harris Bank (Ruth L.), Rotary Club, City staff, St. Peter Volunteers, and Columbia St. Mary's for a wonderful social afternoon in the park

**Kudos:** 90 Year old member Lou P. took the trophy for best of category for hand built ceramic monk at the State Ceramic Show!

**Kudos Firehouse Friends: Congratulations** to the Firehouse Friends group! At the Ozaukee County Fair they were awarded 24 Blue Ribbons (1<sup>st</sup> Place) on a variety of projects. Items were on display in August in the showcase. See complete list in office.

**Library Display:** Rhea Yovanovich

**August Newsletter Crew:**

Geri Johnson, Nelda Bartz, Betty Last, Joan Hansen, Joan Murphy, Pat Voeller, Ethelynn Schumacher, and Rosemary Weiland

**Volunteer Opportunities**

*“One person can make a difference and every person must try.” – John F. Kennedy*

**Bakers & Hostesses-** The Center needs *homemade sweetbreads* by 9:00AM Fri. Sept. 10 for 50 visitors Sun. Sept. 12. **Hostesses** will help Sun. Sept. 12 meet and greet the guests and give each person a wrapped slice to go 8:30 AM-9:45 AM.

**Senior Singers – Coordinator & Accompanist needed** – Do you play piano or know someone who does? Contact the office by Sept. 1.

**Office Volunteer Assistants-** Regular 4<sup>th</sup> Friday morning & on-call volunteers are needed. Contact Catherine if you would like to help answer phones, record memberships & payments.

**Donations, Gifts or Memorial**

Process for memorials: The memorial is to the Port Senior Center with or without a specified purpose. When specified, the Director and group review the purpose to improve or enhance the group. *You can make the Port Senior Center a recipient of a gift, any time of the year.*

**On behalf of the Friends, Thank you to the donor for the generous gift in honor of Betty and the late Robert Ewig.** The Friends of the Port Washington Senior Center is a 501-C organization which can accept your charitable gifts now or designated for the future. You may also choose to join as a member, pick up an application at the Senior Center.

**Programs & Classes for Healthy Living**

**Aqua Exercise Class**

**CELEBRATING 25 YEARS (June 24, 1986)**

One class is held on Tuesday, Thursday, and Friday at 6:40 AM. Cost is \$6.00 for member and \$10.00 for non-member per month. Class is held at the District Aquatic Center TJ School on Holden St. You do not need to get your hair wet, bring a towel & suit, and increase your flexibility. Register monthly at the Center or 284-5821.

**Arthritis Exercise Course**

**Session II Sept. 8 – Oct. 20 2010**

Mon & Wed. at 9:45 am for seven weeks. The fee includes an Arthritis Foundation trained instructor with experience, exercise instruction & arthritis information. Member fee is \$30.00 per member & \$35.00 for guest. Please register with fee by Sept 2. Meets at Park & Rec building.

**No Falls Class**

**Session III Oct. 25-Dec 8, 2010**

A combination of strength, balance, vision and flexibility exercises designed to reduce the number of falls in older adults. Studies have shown that when these components are taught independently of each other there is not significant reduction in falls, but if they are taught together in combination, studies have shown a 15-32% reduction of falls. Although there is no way to guaranty that you will never fall, being stronger and more aware of how to react to certain situations helps to reduce the risks related to these types of accidents. The class is 7-weeks at 9:45 at the park and rec office building. The fee is \$30.00 for members with a one-time \$15.00 equipment fee for new participants. Non-members \$35.00 with one time fee of \$15.00 per person.

**Ballroom Dance II Class**

**Dates: Thurs. Sept. 23- Oct. 21**

**Registration due Sept. 20**

Build on the beginning steps of the dances. Instructor is a dance instructor with several competition wins in ballroom. Lower Level of Center 4:00 – 5:00 PM. This class is for those who would like a refresher on the steps or is

*New*

*New*

interested in learning. Also, dance is a fun approach to wellness!

**Fee:** \$35 member; \$60 member couple and \$40 non-member \$70 non-member couple. Minimum class size is 3 people.

### **Beginning Sheepshead Classes**

**Dates:** Thurs. Sept. 30 –Oct. 21

**Time:** 1:00 – 3:00

Interested in learning sheepshead or refreshing skills to join Tuesday night or play more comfortably with others? This class is for you. An active member will lead a teaching session for 4 weeks. **Register by Thur. Sept. 23 as space is limited!** No fee members and non-member \$5.00.

### **Silver Strikers Wii Bowling**

*New league for September* 6 weeks begins Sept. 28 at 9:30 AM. Teams are 2 people. \$5.00 per team; \$11.00 per guest team.

Register by Sept. 21 and stop in for demonstration on Tues. Sept. 21.

### **Bocce Ball**

**Dates: Tuesdays to Sept. 14**

Weekly team games on Tuesdays at 9:30 AM.

**Please register** at the Center. *Rain days will meet at the Center for Wii!* Teams selected weekly. No fee for members and \$5.00 guests for the weekly games.

### **Lift to Live Class**

**Dates: Sept. 7 – Oct. 21**

**Register with fee by Sept. 2**

This 6-week exercise *program for women 40 and older* will be offered Tues. & Thurs. mornings 9:30 – 10:30 AM at the Park and Rec Office. The cost will be \$30 per member and \$40 per guest plus equipment. A Physician release form must be completed for all new participants or present members with physical or health changes. Class size: minimum 8 max. 15

### **Tai Chi Beginners Course Session III**

**Dates: Mondays to Sept. 27**

9:00 AM. Meets lower level of Senior Center.

### **Tai Chi Continuing Form Session III**

**Dates: Mondays to Sept. 27**

Third 12- week session taught by KT Rusch. 10:00 AM lower level of senior Center.

### **Tai Chi Beginners Course Session IV**

**Dates: Mondays Oct. 4 – Dec. 20**

KT Rusch will teach this 12-week course at 9:00 AM. Tai Chi promotes balance, flexibility, & good overall health. Meets lower level of Senior Center. Class fee \$95.00 per member and \$105.00 guest. Register with fee by Mon. Oct. 4.

### **Tai Chi Continuing Form Session IV**

**Dates: Mondays Oct. 4 – Dec. 20**

Must have instructor okay to register if new participant. 12- week session taught by KT Rusch. 10:00 AM lower level of senior Center. Class fee \$95.00 per member and \$105.00 per guest. Register with fee Mon. Oct. 4.

### **Friday Book Talk**

The meeting will be Friday, Sept. 10 at 9:30 AM at the Niederkorn Library. The book discussed will be Guernsey Literary and Potato Peel Pie Society by Mary Ann Shaffer and Annie Barrows, reviewed by Roz Warren. Come join this lively discussion. *Preview October 8: Rainwater by Sandra Brown; reviewer Muriel Ford.*

### **Ceramic Pottery- ALL Skill Levels**

Meets Thursday mornings from 9:00 – 11:00 the fee is \$2.00 per week for members plus glaze, firing, and green ware piece! Non-member fee is \$4.00 per week plus supplies. Ceramic instructor will be present on the 1<sup>st</sup>, 3<sup>rd</sup> and 5<sup>th</sup> Thursdays of the month.



### Chicks with Sticks

Meets Wednesday at 1:00 at the Center.  
Come share your patterns and ideas. Non-member fee is \$1.00 per week.

### Drawing Lessons for Adults

**Dates:** Mondays September 20 – Oct. 18  
**Registration & fee due Sept. 13.**

Sharpen your drawing skills...for beginners, intermediate and advanced! All are welcome; you need not be a member or senior to join this class! Erin Callahan Blum is the instructor. Register early to reserve your spot! Bring whatever supplies you have, or at least a sketchbook and pencils or charcoal pencils and eraser.

**Class fee:** \$55.00 member and \$65.00 guest.  
Minimum students: 5

### Painting – All Media

**Dates:** Wednesdays, Oct. 6- Nov. 10  
**Time: 3:15-5:15**

This group will be open to painters of all media. We will meet at the senior center. Laurie Sucharda, our instructor, has experience teaching a wide range of media and welcomes you to bring whatever supplies you already have; no need to get all new supplies. Subject & technique discussed weekly. **Cost:** \$50.00 per senior center member \$60.00 per guest.

### Digital Camera Class

Date: Tuesdays 10:00 AM Sept 28-Oct 19  
This 4 week class is for students who are new to digital cameras or need additional help in understanding the camera's functions. We will work with the student's specific camera, so the student is encouraged to bring the camera's operating manual to class. Students will learn how to download pictures onto the computer, use basic editing tools, save pictures to the computer, and burn a CD. Knowledge of computer basics is required for this class.  
Fee is \$37.00 member & \$47.00 guest.

*New*

### Canasta or "Hand and Foot"

Players meet at 7:00 PM on the 1<sup>st</sup> & 3<sup>rd</sup> & 5<sup>th</sup> Mondays: Sept. 20<sup>th</sup>. Everyone is welcome!  
**Non-member fee is \$1.00 per week.**

### Learn to play Cribbage

Hands on cribbage learning sessions the 2<sup>nd</sup> Tuesday of the month: Sept. 14, Oct. 12 during regular cribbage at 1:30. Introduce yourself to the group No fee for members, guests \$2.00 per week, pay in office.

*New*

### Pinochle

This card game is played Wednesday at 10:30 AM. If interested, come to the center on Wed. There is no fee for members and non-members pay \$1.00 per week.



### Game Day – Sept 9 & 23

Meets 2<sup>nd</sup> & 4<sup>th</sup> Thursdays at 10:30 AM  
Play Yahtzee, Dominoes, or other games.  
Prize drawing for \$5.00 to Sentry Foods compliments of Comfort Keepers. No fee for members and guests pay \$2.00 per month.

### Green Felt Club

#### Summer League Champions

1<sup>st</sup> Place Team: Robert Kattner & Louis Bertoni; 2<sup>nd</sup> Place Team: Jerry Downing & Jerry Wilde. The season ended in a tie with both teams having a record of 29 wins & 19 losses! Congratulations!

**Fall league** begins on Wed. Sept. 1. *Fee for fall league is Senior Center membership in good standing plus \$20.00 to the club.*

### Senior Singers –JOIN NOW

Starting on Monday, Sept. 13 at 9:30 - 11:00AM in the piano room this group meets weekly. The group sings at local health centers, senior retirement homes, and more! No charge for members, guests \$1.00 per week. –**A Community Service!** New singers please register by Fri. Sept 10.

### Library Project at Center

The Library arranges for books and videos to be checked out on an honor system for senior's convenience. Please keep videos 1 week or less! Thank you. *There is a sign posted for the date the Center returns the books and videos to the Library. Please return by the date listed.*

### Weekly Ongoing Activities

**Senior Singers** (Chorus) –Resumes Sept. 13

**Aqua Exercise** –Tues., Thurs., Fri., at 6:40AM

**Wellness Classes**–Tai Chi, No Falls or Arthritis, Lift to Live, and more various days check details above.

**Piano Lessons** –Resume Sept 7 (Tues by appointment)

**Green Felt Club** – Senior 8 Ball League Wed., open play Mon & Fri. after 2:00, Sat at 9:00

**Chicks with Sticks**- Wed. at 1:00PM

**Ceramics** – Thurs. at 9:00AM

For information on class cost please call the center at 284-5821!

### Card & Game Clubs

There is **no charge for members** as your membership assists with center operations.

**Non-members** & out of town participants contribute \$1.00 per week in the office!

Bridge – Tues. Ladies Bridge & Fri. at 1:00PM

Cribbage – Tues. at 1:00PM

Sheepshead – Mon & Thurs. at 1:00PM

Game Day – 2<sup>nd</sup> & 4<sup>th</sup> Thurs. at 10:30

#### **Public Card Parties:**

Canasta 1<sup>st</sup> & 3<sup>rd</sup> Mon. 7:00PM

Sheepshead – Tues. 7:00 PM

Pinochle- Wed. 10:00 AM

#### **Clubs and Organizations Meeting At the Center**

Open 8-Ball/Greenfelt Club –Mon.-Fri. at 2:00PM (except when needed for class space) And Sat. at 9:00AM.

City Commission on Aging – 2<sup>nd</sup> Mon. at 7:00PM in the lower level



VFW – Last Wed. at 7:00PM

### Special Events

#### **Lakeside Tea Society**

#### **India Spice Tea**

**Date: Wed. Sept. 22**

Alamelu Vairavan, PBS Show Host, will share her culture including food and tea. She will also have a Cookbook available for purchase (\$30) for those interested. The **food is partially sponsored by Maplecrest Apartments in honor of Senior Center**

**month.** Registration includes the program and tea; participants **must** pre-register. Register by Monday, Sept. 20. Cost: \$3.00 members, and \$5.00 for guests. *Preview October 20: Turkish Travel Tea with Sigrid from Meadowmere Apartments.*



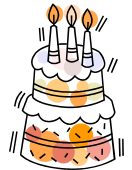
#### **Monthly Birthday Party – Sponsored by Friends of the Port Senior Center**

Friday, September 24, all September birthdays will be celebrated! *This is to celebrate with members and friends your special day.* The celebration will

be in conjunction with the dining site lunch.

Reservations are due to Jill by noon Thurs.

September 23rd! Cost: Donation for lunch!



#### **Lunch Bunch**

**Date: Thursday, September 30**

We will meet at 11:30 at Mama Mia's in Port Washington. Join us for lunch and conversation at this monthly dining out group. Open to all members. New members welcome! Cost is on your own. Register at the Senior Center by Tuesday, Sept. 28

#### **National Senior Center Month: Senior Centers “Your Place to Connect... For information” Join in this special program: Five Wishes ®**

**Date: Tues. Sept. 21 at 12:30**

**REGISTER by Mon. Sept. 20**

VITAS will present this program on documenting living will decisions about

*New*

personal, emotional and spiritual needs. It is a very easy organized approach to difficult decisions. The program for adults is open to any one 18 and over. Refreshments featuring fresh cookies will be served. Registration for lunch may also be made by Monday, Sept. 20. No fee program. Sponsored by the Port Washington Senior Center and VITAS.

### **Make-n-Take Greeting Card Class**

Date: Wed. Sept. 29

1:30 -3:30 PM at Center

Join in the fun of making your own greeting cards for fall holidays. You may add sentiments or keep blank! Perfect way to renew your creativity. Cost is \$12.00 per member \$15.00 guest due with registration by Wed. Sept 22. **Class limit is 12.**

*New*

### **EDIBLE CREATIONS:**

#### **GET-TOGETHER WITH APPETIZERS**

Date: Thursday, October 14

Time: 4:00 -6:00 PM

Get ready for the holiday season. In this class we will be putting together hot and cold items. The hot appetizers can be done well in advance and frozen. This demo and hands-on cooking class . We will be preparing Asparagus Puffs, Pepperoni Pinwheels (with variations), Thyme dip with gourmet chips and fresh vegetables and Basil Parmesan Spread. In this class individuals will be assisting in the demo.

**Complete printed recipes provided.** Class presented by Chef Louise Block of Cuisine At Home Personal Chef Service. Sampling of all items provided.

Fee: \$24.00 per person Min/Max 6/10

Registration and payment due Thur. Sept. 30

### **EDIBLE CREATIONS:**

#### **Holiday Candy**

Date: Nov. 11, 2010 4:00 PM-6:00 PM

Cost: \$22.00 member \$25.00 Guest Max 8

*New*

Everyone will pack a box containing 2 dozen candies! This is a fun hands on holiday class. Make Chocolate Almond Cherry Crisps, Joy to the World Coconut Bars, White Chocolate Cashew Candies, & 2 bark varieties. Payment due with registration by Nov. 1.

### **Port Washington Senior Center & Port Washington Dining Site Events:**

2 – Lottery Lunch

7 – Dining Site Council

7 – Blood Pressure Check

8 - Lottery Lunch

10 – 20<sup>th</sup> Century Toys

13 - Elenore’s Prize Bingo

14 - Lottery Lunch

20 - Information & Assistance

24 - Lottery Lunch

24 - Birthday Party - Sponsored by Friends of the Senior Center

27 – Lottery Lunch & Movie

28 – Prize Bingo

### **Community Events & Information**

#### **Dairy Queen (DQ) Night 4:00 – 7:00PM**

**Date: Monday, Sept 20, 2010**

Dairy Queen in Saukville is celebrating National Senior Month with us by donating a portion of all sales to the Senior Center and Friends of the Senior Center for new bookcases for lending library & unfunded programs! Please stop by for an end of summer dinner or treat.

*New*

#### **Tuesday Public Sheepshead Party**

**Date:** Sept. 28 at 7:00 PM

The public is invited to play and celebrate National Senior Center Month! Entrance fee is \$1.50 and prize money is paid out. Refreshments will be available and recognition will be given to the volunteer coordinators!

#### **Travel Show: Palm Springs, Las Vegas, and the Grand Canyon (Western Sun)**

**Date: Wed. Sept 29 at 12:30**

Kim Hoffman from Mayflower will be her to discuss this spectacular fly/drive trip to the Southwest with a Feb. 24, 2011 departure date. Learn other travel tips and possible discounts and register for door prizes. Cost: NONE (donation for lunch if you can join us). **Pre-register as space is limited by Sept. 22.**

**Travel Show: Islands of New England**

**Date: Mon. Oct. 11 at 11:30 AM**

Julius from Collette Tours will be here

**Nordic Walking Training Class**

**Dates: Tues & Thur Oct. 5-21**

A certified instructor will lead this class on for 3 weeks. This introduction is designed to provide repetitive practice to help you feel the benefits to continue walking. The cost for members \$60.00 includes the poles (\$50.00 value) and \$70.00 non-members. Please dress for the weather conditions.

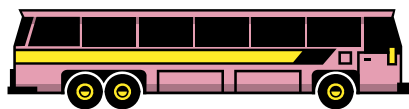
Register by Oct. 1. Maximum is 15.

**Community Cookbook**

Port Washington Community cookbook is being organized by the WJ Niederkorn Recipe Club. The Senior Center is joining in promoting this project. Pick up a submission form at the Senior Center or the library and share your favorite recipes. Let's get 50 recipes in! Deadline is Oct. 29.

**Pickle Ball (paddle game)**

**We have at least 8 interested people for this program.** A joint program is being reviewed with Park & Recreation. The Park Dept is looking for funding for an outdoor court at Kolbach Park. To register for the interest list call the center. Interested in this as a volunteer opportunity? Call Catherine.



**Trip News**

*Motor coach travel has the least emissions of plane or motor travel. Save the planet travel by bus with us!*

**Trip Payment & Refund Policy: Prices are quoted for center members: guests add \$4.00 for day trips or as quoted for a specific trip as a non-member price. Sign up is on or after the call in day listed with each trip. You must register in advance and pay by the deadline or your name may be dropped from the list!**

*Cancellations are not guaranteed a refund. Cancellations within THREE weeks will be refunded only if someone fills the opening! There are trips we reserve the right to advertise which are sponsored by travel agencies. It is for your convenience that we advertise them. All other information is handled by the agency. Contact the office regarding any special needs you have.*

**WHEN LEAVING ON A DAY TRIP PLEASE PARK YOUR CAR IN THE SECOND & THIRD SET OF PARKING ROWS. THANK YOU!**

**Show Me the Money**

**Date: Thur. Sept. 16**

**Registration Open – only 5 seats**

**Payment due with registration.**

Fascinating tour gives an inside look at money. How it is made, lost, and where it comes from. Visit the **Chicago Board of Trade, Federal Reserve Bank**, and have a special lunch at the Cooking School. Pick up detailed flyer at the Center. **Cost: \$79.00 per person.**

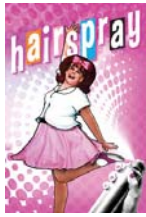


**Fireside Presents: Hairspray**

**Date: Thur. Sept. 23 – 8 seats**

**Payment due with registration or Sept 2!**

This show was a smash Broadway hit. It's 1962 and in the city of Baltimore young Tracy Turnblad, a big girl with big hair and an even bigger heart, has only one passion – to dance. When she wins a spot on a popular TV dance show she is transformed from



outsider to teen celebrity. But can she win the love of handsome Link Larkin and defeat the evil plans of teen princess Amber Von Tussle?

**Menu:** Garden Salad, Freshly Baked Breads from The Fireside Ovens; **Chicken Piccata**, served with Grilled Asiago Polenta topped with Marinara Sauce, Snap Peas and Carrots. Dessert is **Southern Pecan Pie** and Coffee, Tea or Milk. **Cost:** \$83.00 member and \$85.00 guest includes deluxe motor coach, dinner show, gratuities, and escort! Depart Port at 8:15 am.

**Holy Hill and Horicon Marsh**

**Date: Wednesday, October 13, 2010**

**Registration open – 12 seats**

**Payment due September 13**

Be inspired by the peace and beauty of Holy Hill in its autumn splendor, enjoy a family style luncheon at Ginger’s Hideaway, and then enjoy a boat tour of Horicon Marsh and view flocks of migratory geese. Depart Port at 8:15 AM. Cost is \$69 for members and \$73.00 for guests.

**Christmas in the Country**

**Date: Tuesday, Dec.7, 2010**

**Registration open**

Luncheon and a holiday revue “Hooray for the Holidays” at the Grand Geneva Resort followed by tea and time to browse the unique shops. Upon departure we will drive through the brilliant light show created by over 500,000 lights throughout the grounds.

Cost: \$89 per person which includes escort, motor coach, lunch and all admissions. Payment is due by November 1, 2010.

**The Child –The Story of the First Christmas at the Fireside**

**Date: Thurs. Nov. 18**

**Registration open**

A Fireside Christmas featuring the World Premier of a Brand New Musical – THE

*New*

*New*

CHILD. This season marks the return of The Fireside’s wildly popular musical revue format in this unique and special Christmas offering. Act One of our show is A FIRESIDE CHRISTMAS – the name that our patrons, young and old, have come to know and love from 16 years of new and different Christmas revues. It’s all there again – the beautiful gowns, the colorful costumes, the breath-taking dances, and the exciting medleys of beloved Christmas songs in a fast-paced, jolly, delightful potpourri of holiday cheer. In Act Two of this unforgettable Christmas show we are proud to present the world premiere of a brand new musical by the creators of THE ROCK AND THE RABBI and THE WITNESSES entitled THE CHILD. Through a wonderful combination of intimate storytelling and acoustic music, you’ll experience the first Christmas. Written especially for The Fireside this new show allows us to see the birth of “The Child” through the eyes of Joseph, Mary’s husband. All new parents are full of feelings of wonder and inadequacy . . . and Joseph and Mary were no exception.

**Cost:** \$83.00 member and \$85.00 guest includes deluxe motor coach, dinner, show, gratuities, and escort! Depart Port at 8:00 am. **Payment due October 7, 2010**

**Fox River Mall Shopping Appleton**

**Date: Mon. November 22**

**Registration now open**

We will again be shopping until you drop at the Mall in Appleton. The Cost for members is \$24.00 and \$26.00 for guests for a deluxe motor coach bus, snacks, and beverage. Door prizes will be drawn on the bus. Depart Port at 8:30 AM. Return approx. 6:00 PM. Payment due Oct. 28.



*New*

**The Child at the Fireside**

**The Story of the First Christmas**

**Date: Wed. Dec. 15**

### Registration open

**Cost:** \$83.00 member and \$85.00 guest includes deluxe motor coach, dinner, show, gratuities, and escort! Depart Port at 8:00 am. Payment due Nov. 1, 2010

### Oneida Bingo & Casino Trips

**New rates in effect July 1: Cost \$28.00 per person with casino rebate \$25.00**

Yearly schedule available at Center. Landmark Tours provides this trip several times a month. Call 375-1426 to register.

### 2010 Extended Trip

#### Celebration Belle Cruise

**Dates: October 28<sup>th</sup>—29<sup>th</sup>**

The Senior Center is proud to offer this wonderful journey back in time. It features an afternoon aboard the riverboat "Celebration" with their famous shows. Listen or dance as we float along the mighty Mississippi aboard the largest riverboat on the river. **COST: \$169 per person (based on double occupancy) \$209 single**  
**Does not include gratuity for driver or escort. Balance due as a final payment by Sept. 17<sup>th</sup>.**



### 2011 General Day Trips:

March – McHappy Tour  
April – Mystery  
May – Beauty of Green Bay  
June – Chicago  
Brewer's Games and more!

### 2011 Fireside trips:

March 3 – Annie  
May 12 – Closer Walk with Patsy Cline  
July 14 – David  
Sept. 7 - Seven Brides/ 7 Brothers  
Nov. 10 & Dec. 14 - Christmas

### 2011 Extended

Feb. 24 - Palm Springs, Las Vegas & Grand Canyon  
August – 2 nights in Door County  
Sept. – Islands of New England  
Oct. – Girlfriends & Me to Mall of America

### 2011 Day Trips

#### Swing on a Star

**Date: Jan. 20, 2011**

It was a time of great changes, great stars, great promise, and great music. It was the time when swing was king! It was the time of Sinatra, Crosby, the Andrews Sisters, the Marx Brothers, Abbott and Costello, Fred Astaire and Ginger Rogers, Jimmy Dorsey, Benny Goodman, Count Basie, Louis Armstrong, Tommy Dorsey, Glenn Miller, and so many more. And you can return to that wonderful time in this new edition of The Fireside's wildly popular original, musical extravaganza. It's all there - the sights, the sounds, the laughter, the dancing, and most especially the music. Young and old alike will cheer as this immortal era is brought to life again by a spectacularly talented cast of performers including The Fireside's own LIVE Big Band!

**Featured Menu: Beer and Cheddar Cheese Soup with Jones Hickory Smoked Canadian Bacon, Freshly Baked Breads from The Fireside Ovens, Roast Tenderloin of Beef**

Chef Carved and glazed with a Madeira Wine Sauce. Served with a Potato Croquette au Gratin, Green String Beans and Harvard Beets with **British Toffee Cake for dessert.**

**Cost:** \$85.00 member and \$89.00 Guest  
Depart: Port at 8:00 AM includes stop at Jones Dairy before arriving at Fireside

### 2011 Extended Trip

#### Palm Springs, Las Vegas & Grand Canyon

Depart Feb 24, 2011 for 9 days. This trip is a fly/drive deluxe escorted holiday presented by The Port, Grafton & Cedarburg Senior Centers through Mayflower Tours.

**TRAVEL SHOW DATE:** Wed. Sept. 29 12:30 at the Senior Center. Learn more about this spectacular trip with 2 nights in Grand Canyon National Park; Guided tour of Hollywood, Kodak Theater, Rodeo Drive; Palm Springs guided tour with celebrity neighborhood of Las Palmas; Reserved seats for the Follies; General Patton Museum; and so much more! Cost includes Air fare & home pick up \$2,209 for Twin Rate.

Sign up for travel show by Sept. 27 or contact the office for a flyer. Final payment due to Mayflower on Jan. 1, 2011.

### **Center Operations & Procedures**

We encourage our members who **may need** special assistance to register for events, programs, and trips **with a** friend, family or caregiver **to provide the assistance** they may need. Due to the limit of staff, the Center can not provide one-on-one assistance during the event, class, or trip. Please register with staff so we can be aware of individual needs.

**Membership**- Annual membership is paid January to December. **Individual fee is \$15.00 and Couple \$20.00** for City and Town of Port Residents.

*New Out of Town  
Member Fee*

**Out of town individuals** to receive membership the fee is \$35.00 per person or \$62.00 per couple per year, it includes the newsletter and may be paid quarterly; or may subscribe to the newsletter for \$10.00 per year. **Value of membership in the Center** offers you a place to read the Journal Sentinel, Ozaukee Press, News Graphic, & a variety of magazines including Reader's Digest, Outdoor Living, Good Housekeeping, Family Fun, & more saving you money on subscriptions!

**Recyclables** – There is a container on both levels for aluminum cans. The can should be rinsed then deposited in the container. Clean cans are preferred for recycling. Thanks to all who help.

### **Welcome New Members**

We look forward to seeing you at the Center! Stop in and reintroduce yourself or use your free coupon for lunch!

*Patricia Baganz &  
Mary Lou Fontaine*

**Monthly Birthday Party –Friday, Sept. 24**  
*Sponsored by Friends of the Port Senior Center*

Friday, Sept. 24, all September birthdays will be celebrated! Reservations are due in to Jill by noon Thursday, September, 23!

Cost: Lunch Donation.

*Belated Greetings Aug 10 Mary Joy Kattner & Aug 18 to Ken Hoard!*

### **HAPPY BIRTHDAY**

- 1 Betty Ewig, Jean Weiss
- 2 Bernice Winnemueller  
Gerry Chaney, John Ketter
- 3 Elmer Ter Linden
- 4 Jean Eichenhofer, Mary Tebbit
- 5 Jim Olson
- 7 Allan Gauthier, Nelda Bartz
- 9 Floyd Peters, Evelyn Rinn
- 11 Michael Beattie,  
Germaine Meyer,  
Adrian Voeller
- 12 Shirley Rowdon, Phillip Bruno
- 13 Elroy Maechtle, Anita Kreuser
- 14 Carol E. Conrad
- 16 Mary Poull, Gailya A. Geib
- 18 Liz Streff
- 19 Mary Lou Poull
- 20 Zita Kurcz, Lou Probst
- 21 Will Krainz, Donald Kolbach  
Joan Schmit, Virginia Lee
- 22 Cheryl Moulds, Stephen Ritter  
Ann Ross
- 23 Orville A. Froh, Joan Rooney
- 24 Sharon Brown,  
Virginia Franzke,  
Robert Hittiger
- 27 Floyd Prom
- 28 Ronald Mans
- 29 Nancy Klever, Theresa Gillich
- 30 Ruth Ann Jushka  
Patrick Robertson



## Miscellaneous

### Friends of the Port Washington Senior Center

Membership dues are separate from the Center. The Friends brochure highlights the various levels from Basic \$25.00 per year; Associate at \$75.00 per year; Partner at \$250.00 which is every 5 years; and Life Circle Membership at \$3,000 which is a one time payment. It is for couples so an individual would be at \$2,000 lifetime.

**Board Members** are: Ann Augustine, Harold Johnson, & Dick Stoughton

There is the opportunity to designate charitable bequest or one time donations. Pick up a brochure at the Center if interested.

**A generous gift came to the friends August 2010 in honor of Betty & the late Robert Ewig. Thank you!**

### Lost & Found

A pair of wire rimmed sunglasses was found on the lower level on May 18<sup>th</sup>. Please claim them in the office if they belong to you.



Members of Firehouse Friends Group at the Center with some of the prize winning articles from the 2010 Ozaukee Fair.



Honored Green Felt Members  
L TO R:  
Harold Johnson  
Carl Federspiel



Waiting in line for ice cream at the Social



Celebrating with August Birthdays