

The Leisure Times

February 2011

Port Washington Senior Center
102 East Pier Street
(262) 284-5821
E-mail: ckiener@ci.port-washington.wi.us

Catherine Kiener, Director
, Assistant
Steve Broyles, Environment

**Center Office Hours: Monday – Thursday 8:30AM – 4:00PM
Friday 8:30AM- 2:00PM**

Mission: To promote healthy aging by providing cost effective programs, classes, activities and services to citizen's 55 years and better. Adopted April 10, 2002

Director's Report

The office is working on the city annual report and in 2010 we had 50 new members! The attendance initial review of several months is similar to 2009 for the number of members per month using the center. REMEMBER TO SIGN IN EVERY TIME YOU COME TO THE CENTER!

A walk through to see the new center space without office cubicles before renovations begin is scheduled for Mon. Feb. 7 at 11:00 for an hour. This will be an opportunity to see the potential for members who have not had the opportunity to see the interior spaces. No registration required!

Welcome the Assistant at a lunch reception on Tuesday, Feb. 8 at noon. Reservations to Jill by Feb. 7.

UPCOMING EVENTS:

- **New sessions begin for classes**
- **New Wellness program, no cost: Seated Exercise with Heritage Rehab staff starts Thur. Feb 3 at 11:30 AM**
- **AARP Tax Filing by Appointment begins Mon. Feb 7**
- **Luncheon for Assistant Feb. 8**
- **Super Bowl Game sign up 3rd & 4th**
- **Valentine's Party Mon. Feb. 14**
- **Healthy Heart Feb. 24 at 12:45**
- **Birthday Party Fri. Feb. 25 noon**
- **Zumba Demonstrations see pg 5**

- **Chili Supper & Memorial 8 Ball Tournament March**

Foster Street Property Temporary Location Update

Bids will be approved at the Feb. 1 Council meeting. An **opportunity to see the facility without office cubicles** will occur on Mon. Feb. 7 at 11:00 AM. Each regular group meeting at the center should be getting ready for the move by letting the office know who will help with packing (or supervising) of the groups' supplies. Please call the office with questions and watch Center and newsletter for updates.

Winter Weather Closings

The Senior Center will close during severe weather such as a blizzard. Fox 6 is the Center's official station for notice.

Sentry Receipts

First quarter receipts for January 1 – March 31, 2011 due Mon. April 4, 2011. Drop them off any time in the can by the sign in sheet on either level.

Thank You, Thank You

January Newsletter Crew:

Sincere thanks to Marilyn Schmit, Aileen Wiltgen, Joan Murphy, Sandi Preisler, Joan Hansen, Geri Johnson, and Rosemary Wieland.

Volunteer Opportunities

"One person can make a difference and every person must try." – John F. Kennedy

Super Bowl Game Coordinator-Interested in coordinating a game for Thur. Feb. 3?

Contact the Center office by Feb. 2

Office Volunteer Assistants- On-call & volunteers are needed. Contact Catherine if you would like to help answer phones, record memberships & payments.

Grand Opening 2011 – Planning committee; Need 1-2 men & one more woman to join JoAnn and Joy. Contact Catherine by Feb. 7, 2011

Lost and Found

1. Golden faux pearl earrings found in the Center in late December. 2. Women's mittens charcoal grey from Nov. 15. Claim in office ASAP!

Donations, Gifts or Memorial

Process for memorials: The memorial is to the Port Senior Center with or without a specified purpose. When specified, the Director and group review the purpose to improve or enhance the group. *You can make the Port Senior Center a recipient of a gift, any time of the year.*

The Friends of the Port Washington Senior Center is a 501-C organization which can accept your charitable gifts now or designated for the future. You may also choose to join as a member. Pick up an application at the Senior Center.

Programs & Classes for Healthy Living

Aqua Exercise Class

One class is held on Tuesday, Thursday, and Friday at 6:40 AM. Cost is \$6.00 for member and \$10.00 for non-member per month. Class is held at the District Aquatic Center TJ School on Holden St. You do not need to get your hair wet, bring a towel & suit, and increase your flexibility. Register monthly at the Center or 284-5821.

No Falls Class Session I 2011

Dates: Jan, 31 – March 23 (no class 3/3-11) A combination of strength, balance, vision and flexibility exercises designed to reduce the number of falls in older adults. The class is 7-weeks at 9:45 at the park and rec office building. The fee is \$30.00 for members with a one-time \$15.00 equipment fee for new participants. Non-members \$35.00 with one time fee of \$15.00 per person.

Ballroom Dance Class

Dates: Thurs. February 3-March 3, 2011

Learn and build on the beginning steps of dances. Instructor is a dance instructor with several competition wins in ballroom. Lower Level of Center 4:00 – 5:00 PM. This class is for those who would like a refresher on the steps or is interested in learning. Also, dance is a fun approach to wellness!

Fee: \$35 member; \$60 member couple and \$40 non-member \$70 non-member couple.

Due Feb. 1. Max class size is 6 people.

Computer Classes

Internet Basics/E-Mail

Dates: Feb. 1 & 8 4:30-6:00

PREREQUISITE: Must be able to use a computer mouse. Session one will cover search engines with practice of simple searches; brief intro to setting up free e-mail accounts; send and receive message; & set up an address book. Class maximum is 4.

Register with payment by Feb. 1.

Cost: \$15.00 per member/ \$25.00 guest

New Dates



Computer Lab

The computers are available for members on Tues. & Thurs. from 10:00 AM-3:00 PM.

No lab time when a class is scheduled.

Silver Strikers - Wii Bowling Session I

This 10 week league play will start Jan 11 to March 15, 2011. League fee will go toward end of season party. Individual or Teams of

2. \$5.00 per team; \$2.50 individual; \$11.00 per guest team.

Lift to Live Class Session I 2011

This 6-week exercise *program for women 40 and older* will be offered Tues. & Thurs. mornings 9:30 – 10:30 AM at the Park and Rec Office. The cost will be \$30 per member and \$40 per guest plus equipment. A Physician release form must be completed for all new participants or present members with physical or health changes. Class size: minimum 8 max. 15 **Register by Jan. 25**

Seated Exercise Program

Dates: Thursdays Feb 3- March 10

This 6-week program will meet on Thursdays at 11:30 on the main floor. There is no cost thanks to Rehab staff from Heritage Health and Rehab. Register by Feb 3. Cost: NO CHARGE

Hatha Yoga

Registration open to 12 and older

Dates: Saturdays Jan. 15 – March 5 2011

The **benefits of yoga include tension relief, deep breathing, and stress management.**

This popular 7-week class will be held at TJ School Library. Bruce Van Dyke returns to teach this level one Yoga course. The class will meet on Saturday at 9:15 AM .

Tai Chi Beginners Course Session I

Dates: Mondays to March 21, 2011

KT Rusch will teach this 12-week course at 9:00 AM. Tai Chi promotes balance, flexibility, & good overall health. Meets lower level of Senior Center. Class fee \$95.00 per member/ \$105.00 guest.

Tai Chi Continuing Form Session I

Dates: Mondays to March 21, 2011

Must have instructor okay to register if new participant. 12- week session taught by KT Rusch. 10:00 AM lower level of senior

Center. Class fee \$95.00 per member and \$105.00 per guest.

Friday Book Talk

The meeting will be Friday, Feb. 11 at 9:30 AM at the Niederkorn Library. The review by Liz Schaefer is on The Hotel at the Corner of Bitter & Sweet. Come join this lively discussion. *Preview March: Weekend Warriors by Fern Michaels with a review by Loretta Federspiel.*

Ceramic Pottery- ALL Skill Levels

Meets Thursday mornings from 9:00 – 11:00 the fee is \$2.00 per week for members plus glaze, firing, and green ware piece! Non-member fee is \$4.00 per week plus supplies. Ceramic instructor will be present on the 1st, 3rd and 5th Thursdays of the month.

Chicks with Sticks

Meets Wednesday at 1:00 at the Center. Come share your patterns and ideas. Non-member fee is \$1.00 per week.



Painting – All Media Session I

Dates: Wed. until March 16 2011

Time: 3:15 PM-5:15 PM

Painting – All Media Session II

Dates: Wed. until March 16 2011

Time: 3:15 PM-5:15 PM

This group will be open to painters of all media. We will meet at the senior center. Laurie Sucharda, our instructor, has experience teaching a wide range of media and welcomes you to bring whatever supplies you already have; no need to get all new supplies. Subject & technique discussed weekly. **Cost:** \$50.00 per senior center member \$60.00 per guest.

Make-n-Take Spring Card Camp

Date: Wed. March 31 1:30 to 3:30 pm

Join Instructor Jennifer Dimmer to make Holiday Card Creations with stamps. Price



New

includes materials and supplies to make five cards. Samples on display at the Senior Center in the glass showcase.

Cost: \$10.00 per member and \$12.00 for guest. Maximum is 12!

Canasta or “Hand and Foot”

Players meet at 7:00 PM on the 1st & 3rd & 5th Mondays: Feb. 7 & 21. Everyone is welcome! **Non-member fee is \$1.00 per week.**

Learn to play Cribbage

Hands on cribbage learning sessions the 2nd Tuesday of the month during regular cribbage at 1:30. Introduce yourself to the group No fee for members, guests \$2.00 per week, pay in office.

Pinochle

This card game is played Wednesday at 10:30 AM. If interested, come to the center on Wed. There is no fee for members and non-members pay \$1.00 per week.

Game Day – Feb. 10 & 24

Meets 2nd & 4th Thursdays at 10:30 AM Play Yahtzee, Dominoes, or other games. Prize drawing for \$5.00 to Sentry Foods compliments of Comfort Keepers. No fee for members; guests pay \$2.00 per month.



Green Felt Club

The first half results: Jim Wester & Ron Weiss tied Ron Mans & Harriet Augustin with 36 wins and 18 losses. Ron & Harriet won the best of five playoff!



Senior Singers

Mondays at 9:30 -11:00AM in the piano room this group meets weekly. The group sings at local daycares, health centers, senior retirement homes, and more! No charge for members, guests \$1.00 per week. –A **Community Service program!**



Library Project at Center

The Library arranges for books and videos to be checked out on an honor system for senior’s convenience. Please keep videos 1 week or less! Thank you. *There is a sign posted for the date the Center returns the books and videos to the Library. Please return by the date listed.*

Monday at the Movies- Classic TV with Peaty Coat Junction

Date: Feb. 28 at 12:30

Join in the laughs with the classic comedy. Preview for March:



Weekly Ongoing Activities

Senior Singers (Chorus) –Monday

Aqua Exercise –Tues., Thurs., Fri., at 6:40AM

Piano Lessons –Tuesdays by appointment

Green Felt Club – Senior 8 Ball League Wed., open play Mon & Fri. after 2:00, Sat at 9:00

Chicks with Sticks- Wed. at 1:00PM

Ceramics – Thurs. at 9:00AM

Wellness Classes–Tai Chi, No Falls or Arthritis, Lift to Live, and more various

days check details above. Monthly Blood

Pressure Checks – See Calendar Page

For information on class cost please call the center at 284-5821!

Card & Game Clubs

There is no charge for members as your membership assists with center operations.

Non-members & out of town participants contribute \$1.00 per week in the office!

Bridge – Tues. Ladies Bridge & Fri. at 1:00PM

Cribbage – Tues. at 1:00PM

Sheepshead – Mon & Thurs. at 1:00PM

Game Day – 2nd & 4th Thurs. at 10:30

Public Card Parties:

Canasta 1st & 3rd Mon. 7:00PM

Sheepshead – Tues. 7:00 PM

Pinochle- Wed. 10:00 AM



Clubs and Organizations Meeting

At the Center

Open 8-Ball/Greenfelt Club –Mon.-Fri. at 2:00PM (except when needed for class space) And Sat. at 9:00AM.

City Commission on Aging – 2nd Mon. at 7:00PM in the lower level

VFW – Last Wed. at 7:00PM

Special Events

Lakeside Tea Society

Date: Wed. March 16 at 1:30 PM

A southern sweet will be served with an afternoon tea. Registration includes the program and tea; participants **must pre-register.** Register by Monday, March 14. Cost: \$3.00 members, and \$5.00 for guests.



Monthly Birthday Party – Sponsored by Friends of the Port Senior Center

Friday, February 25, all February birthdays will be celebrated! *This is to celebrate with members and friends your special day.* The celebration will be in conjunction with the dining site lunch. Reservations are due to Jill by noon Thurs. February 24! **Cost:** Donation for lunch!



Super Bowl Game

The Center and Dining Site are sponsoring a Super Bowl Squares game! Make a reservation for lunch on Thur. or Fri and sign up for squares free! Numbers will be drawn to correspond to the game score and the winners will be those who have the corresponding numbers on the square each quarter. Winners will receive 8X10 Packer NFC Champions photo or gift certificate or cash! Must attend lunch to participate with prizes available for pick up on Mon. Feb. 7.



New

END OF WINTER CHILI SUPPER

Followed by Bingo or Nic Jaque Memorial 8-ball Tournament!

Mon. March 21 at 4:45 PM. Dinner includes salad, chili or choice of chicken

New

soup, bread, and dessert, followed by **cash prize bingo** games with cash prizes by a sponsor or **Memorial 8-Ball Tournament with prize trophy** at 5:45 PM. Register by calling the center or e-mail ckiener@ci.port-washington.wi.us by March 14. Cost is \$6.00 per member and \$9.00 for guests.

Port Washington Senior Center & Port Washington Dining Site Events:

- 2- Blood Pressures
- 3 & 4 Super Bowl Squares Game
- 8-Site Council
- 21-President Trivia
- 8-Money Bingo
- 14-Valentine Party with Prize Bingo
- 21- Information and Assistance Specialist
- 25-February Birthday Celebration
- 28-Classis TV with Petticoat Junction

Community Events & Information

Monthly Blood Pressure Checks

The Senior Center hosts monthly screenings by volunteer retired nurses. The check ups are the 1st Wed. of the month, Feb 2 & March 2 from 12:30-1:00. No charge.

February is Heart Healthy Month

Topic: Heart Disease Risk Factors

Date: Thur. Feb. 24 12:45 – 1:30

Heart disease is the number one killer of both men and women in the US. Join Dr. John Bonovia for an informal talk about how to care for your heart and learn easy steps that can lower your risk and prevent heart disease. Register by calling 284-5821 or (414) 963-9355 by Tues. Feb. 22. Thank you Columbia St. Mary's for coordinating!

ZUMBA GOLD DEMO DAYS

Dates: Wed. March 2 at 4:30

Or Friday, Feb 18 & 25 at 8:30 AM

This newest aerobic routine designed for adult beginners and participants with



physical limitations. A certified Gold instructor will lead the 30-45 demo workout class. Join the new wellness class sweeping the country at the Port Adult Community Senior Center!

Cost: NO CHARGE Center Members or Silver Sneaker members and \$3.00 guests. MUST PRE-Register by Feb. 17.

Nordic Walking -resumes in March 2011

Tax Assistance for Seniors

AARP sponsored tax assistance will be available at the Center on Monday's by appointment from 11:30-3:30 Feb 1 – April 12. This is for seniors filing **SIMPLE taxes**, low to moderate incomes. *When making an appointment the center needs your telephone number and the specific tax assistance you need help with.* **homestead filing or simple income tax preparation.**

For the appointment bring 2015 return, identification & social security number, income/property, health insurance premiums, and all other related documents. Call 284-5821 for appointment.

New

VITA Tax Assistance

Saturday's from Feb. 6– April 9 a volunteer will be here for walk-in-help, from 9:00 AM – 2:00 PM NO reservations taken, This service is a federal program open to all **simple tax filers meeting an income restriction.**

Special Book Donation

Memories Never Die by Alan D. Schmitz Member Adeline donated a copy of her son's book to the Center. It is about a veteran of operation Desert Storm who is not prepared for the stress of incurring an injury that was robbing him of his memory. Check it out from the office!

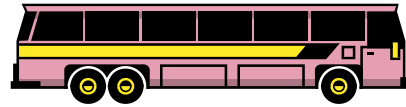
Lunch Bunch at Lam's

Date: Wed. Feb. 23, 2011

New

Join us for lunch and conversation at this monthly dining out group. Meet at Lam's in Saukville at 470 East Green Bay Avenue (HWY 33). Cost is on your own.

Reservation due to the Center by Mon. Feb. 21, 2011.



One Day Adventure Trip News

Motor coach travel has the least emissions of plane or motor travel. Save the planet travel by bus with us!

Trip Payment & Refund Policy: Prices are quoted for center members; guests add \$4.00 for day trips or as quoted for a specific trip as a non-member price. Sign up is on or after the call in day listed with each trip. You must register in advance and pay by the deadline or your name may be dropped from the list!

Cancellations are not guaranteed a refund. Cancellations within FOUR weeks will be refunded only if someone fills the opening! There are trips we reserve the right to advertise which are sponsored by travel agencies. It is for your convenience that we advertise them. All other information is handled by the agency. Contact the office regarding any special needs you have.

WHEN LEAVING ON A DAY TRIP PLEASE PARK YOUR CAR IN THE SECOND & THIRD SET OF PARKING ROWS. THANK YOU!

ANNIE

Date: Thur. March 3, 2011

Registration Now Open

Leapin' Lizards, Sandy"! America's favorite cartoon sweetheart is back in one of the most popular Broadway shows of the

century. Winner of seven Tony Awards including Best Musical, ANNIE is a delightful concoction of comic villains, cute little girls, gangsters, Presidents, billionaires, butlers and bums. MENU: **Signature Aloha Salad**; Freshly Baked Breads from The Fireside Ovens; **Chicken Kona Kai** Skinless Breast of Chicken dipped in a special Egg Batter, rolled in Coconut Panko Bread Crumbs, glazed with Brandied Apricot Sauce. Served with Baked Yukon Gold Potatoes, Edamame Soybeans and Sweet Corn and a Plum Tomato stuffed with Creamed Spinach; Dessert is **Chocolate Peanut Butter Cheesecake** and Coffee, Tea or Milk. **Cost:** \$86.00 member and \$90.00 Guest
Depart: Port at 8:00 AM

Admirals Game – Senior Event – NEED 5
Date: Tues. March 22
Need a Commitment by Feb. 23, 2011
Payment due Feb. 26, 2011

Bingo! Prizes! Free Food & Drink! Join with us as the Milwaukee Admirals pull out all of the stops to **celebrate seniors**. When you arrive on our coach bus you get to play Bingo with prizes and a memento of the occasion. Next you get a voucher for a free hot dog or pretzel and a free coffee or soda. Next you get center ice tickets, with not a lot of steps, to see your Milwaukee Admirals play the Oklahoma City Barons. During the first intermission you get to see the “Bald Eagles” Hockey Team in action (Our local over 60 hockey team). What a great social outing this will be as we join other seniors from the area. Departure to be announced.
Cost: Approximately \$32.00 for ticket and transportation.

McHappy Tour – I’m Lovin’ It!
Date: Wed. March 30, 2011 –
ONLY 5 SEATS LEFT at Port!
Payment due Feb. 24, 2011

Enter the once-private retreat to experience the History and beauty of the **McDonalds Campus**, unlike any other. You will start the day with **McBingo**, there will be lots of fun **McPrizes** to win and **McHappy Hour**;



each passenger will receive one drink token. Enjoy a glass of wine, beer or the signature “Peppermint Patty!” (Hot Chocolate and Peppermint Schnapps) during the bingo session! You will also see the renowned **Hamburger University** on a **History Tour**. Enjoy a **scrumptious lunch at the Hyatt Lodge** attached to the university overlooking Lake Fred (**not your ordinary McDonald’s lunch but choice of a Gourmet Angus Burger or Fish Sandwich, French Fries, Coffee or Soda, and Dessert**). Everyone will also receive a parting **McGift** before heading home feeling very **McHappy! Depart:** Port at 8:00 AM
Return approx 5:30 PM. Cost: \$95.00 Member & \$97.00 guest.

PLAINS, TRAINS & AUTOMOBILES
Woodstock & Roscoe, IL

Date: Tuesday, April 12th, 2011

We’ll start out our day in Woodstock, Illinois, best known for the filming sites of the movie “Ground Hog Day” and for America’s Largest Railway Museum, the **Illinois Railway Museum**. You will get to take a ride on a train and also tour the many displays. Lunch will be included at the **Woodstock Public House** (MENU: Soup, #1 Lasagna- Home style lasagna stuffed with Ricotta, Italian Sausage, Parmesan & Mozzarella Cheeses Topped with home-made Marinara **OR** #2 Mediterranean Chicken- A 10oz Chicken Breast Marinated in Mediterranean Dressing and Broiled Served with Wild Rice and Vegetables, dessert, coffee or tea). After lunch, we’ll make our way to Roscoe, IL, home to the **Historic Auto Museum**, where history meets entertainment. This museum is a unique collection of over 75 special interest autos as well as countless pieces of Hollywood memorabilia. You’ll see Presidential vehicles, Elvis’ car and memorabilia, JFK history, White House

New

furniture, Presidential limousines, Hollywood celebrity memorabilia, cars from famous television shows including the "Bat mobile" and much more.

Cost: \$89.00 per person with payment due March 8, 2011. Depart: 6:30 AM.



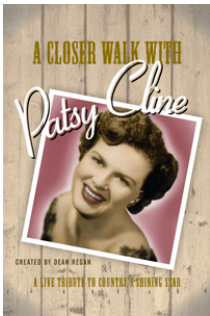
BREWER'S VS REDS

Date: Wed. April 27

We have great seats behind first base at the top of section 109, so not much walking!

Cost: \$43.00 Includes ticket, escort, and deluxe motor coach

Depart Port 10:00 a.m. Payment due April 1, 2011.



A Closer Walk with Patsy Cline

Date: Thur. May 12

Now you can relive all the passion, the drama, the glamour, and the songs of Country Music's greatest legend in the stirring musical tribute A CLOSER WALK WITH PATSY CLINE.

You'll hear all your favorites - "Crazy," "Sweet Dreams," "Walkin' After Midnight," "A Closer Walk With Thee" - as you experience the look, the sound, the magic and the music that made Patsy Cline the first lady of country!

MENU: Cream of Watercress Soup, Barbecued Ribs & Chicken

Barbecued Pork Back Ribs slowly roasted until the tender meat falls from the bone. Accompanied by a Breast of Skinless Chicken dipped into a Tempura Egg Batter and deep fried. Served with Escalloped Potatoes and a Bouquetierre of Garden Vegetables and dessert will be **Panna Cotta** An Italian Custard Flan surrounded by a medley of Fresh Berries flavored with Grand Marnier and garnished with a Pecan Diamond, with coffee, tea, or milk.

Cost: \$86.00 member and \$90.00 Guest
Payment due April 14. Depart: 8:00 AM

The Beauty of Green Bay

New

Date: Tues. May 24, 2011

Registration open

The morning will begin with a fascinating **guided city tour of Green Bay**. You will hear unique, little-known stories of the Green Bay area, told throughout the tour. You will see the city's bustling international seaport and architecturally diverse downtown area. Lunch at Bay City Smokehouse Menu: Garden Salad with Assorted Dressings, Petite Filet with Shallot Butter and Sliced Mushrooms, Baked Potato, Chef's Choice Vegetable, Rolls and Butter, Coffee, Tea or Milk, Chef's Choice of Dessert). After lunch enjoy the Green Bay Botanical Gardens, & Bay Beach wildlife area.

Cost: \$75.00 per member or guest!

Payment due by April 22, 2011.

BREWER'S VS TAMPA BAY RAYS

Date: Wed. June 22

We have great seats behind first base at the top of section 109, so not much walking! Cost: \$43.00 Includes ticket, escort, and deluxe motor coach

Depart Port 10:45 AM. Payment due May 23, 2011

Oneida Bingo & Casino Trips

Next dates: Feb 17, March 10.

Cost is \$28.00 per person with casino rebate on Fun Club Card. Departs from Port Park & Rid Lot at 7:30 AM. Yearly schedule available at Center. [Landmark Tours provides this trip several times a month. Call 375-1426 to register.](#)

2011 General Day Trips:

Mystery Day Trip

July – Ethnic Chicago: The Polish

November – Drury Lane Brunch

2011 Fireside trips:

July 14 – David

Sept. 7 - Seven Brides/ 7 Brothers

Nov. 10 & Dec. 14 – Christmas

2011 Extended

Oct. – Girlfriends & Me to Mall of America

2011 Mini & Extended Trips

Mayflower Tours *books available at center, with Mayflower and mention that you read the brochure at the Senior Center and the Center will get recognition from Mayflower!*

PELLA TULIP TIME FESTIVAL

DATES: May 5-8, 2011

Pella, Iowa 4 Days/3 Nights

Pella is beautiful and unique all year long, but at Tulip Time it comes alive with tulips, Dutch attire, parades, food, fun and more. Thousands of residents wear Dutch attire and celebrate our Dutch heritage. Travel back in time with us to a European village full of windmills, tulips and excitement as we celebrate the 76th anniversary of this colorful festival.

Per Person Cost: \$235 double, \$345 single

INCLUDES:

- Deluxe Motorcoach Transportation
 - Tour John Deere Pavilion
 - Pella, IA City Tour
 - Included Lunch in Pella
 - Grandstand seating for afternoon Dutch Heritage show and afternoon parade
 - Grandstand seating for evening show and lighted parade
 - Side Trip to the Amana Colonies
 - Accommodations for 3 Nights at Meskwaki
 - \$60 total promo cash good towards slots only at Meskwaki
 - 2 Included Breakfast Buffets at Meskwaki
- When you visit Pella, there are historical sights, ethnic foods, Dutch architecture, great shops, and friendly people. On this trip you'll "re-discover Iowa's most colorful tradition".

Payment due March 31, 2011

DOOR COUNTY GET-A-WAY

Dates: Tues. Aug. 23-Thur. Aug. 25, 2011

Limited Seats Available

Deposit due March 15: \$100 per person

This motor coach trip includes 2 nights at Rowley's Bay (used to be called Wagon Trail Resort) featuring Grandma's Swedish Bakery, Washington Island Tour, Dan Meunier concert, Progressive Dinner Tour, Traditional Fish Boil, and more. Detailed flyer at the Center. Cost: \$425.00 Double; 405 triple; 395 quad; 525 single with a \$100 per person deposit due by March 15, 2011 and final payment due July 8, 2011. **Escort: Bonnie.**

ISLANDS OF NEW ENGLAND

Dates: Sept 16 – 23, 2011

Reservations now open must include deposit of \$250.00 see below

Highlights Providence Newport, Boston, Martha's Vineyard, Nantucket, & Hyannis including a cranberry bog, lobster feast, Cape Cod Dinner Train, ferry ride, 7 Breakfasts, 4 Dinners, Roundtrip air from Milwaukee Intl, air taxes & fees/surcharges, hotel transfers. PICK UP detail brochure at Center. Price per person for double is \$2,199; single 2,699; & triple \$2,169. \$250 deposit due with reservation made payable to Collette Vacations. Reserved space available until April 16, 2011! **Final payment due July 18, 2011.**

Center Operations & Procedures

We encourage our members who **may need** special assistance to register for events, programs, and trips **with a friend, family or caregiver to provide the assistance** they may need. Due to the limit of staff, the Center can not provide one-on-one assistance during the event, class, or trip. Please register with staff so we can be aware of individual needs.

2011 Membership renewal- EVERYONE needs to fill out a new membership card!

Membership- Annual membership is paid January to December. **Individual fee is \$15.00 and Couple \$20.00** for City and Town of Port Residents.

**New Out of Town
Member Fee**

Out of town individuals to receive membership the fee is \$35.00 per person or \$62.00 per couple per year, it includes the newsletter and may be paid quarterly; or may subscribe to the newsletter for \$10.00 per year. **Value of membership in the Center** offers you a place to read the Journal Sentinel, Ozaukee Press, News Graphic, & a variety of magazines including Newsweek, Outdoor Living, Good Housekeeping, Family Fun, & more saving you money on subscriptions!

Recyclables – There is a container on both levels for aluminum cans. The can should be rinsed then deposited in the container. Clean cans are preferred for recycling. Thanks to all who help.

In Memorium

Our sympathies are extended to the family of Harold Matthews

Welcome New Members

We look forward to seeing you at the Center! Stop in and reintroduce yourself or use your free coupon for lunch!

Marilynn Stone, Karen Wolf, LeRoy Bley, Joni Hoffman & Roberta Meeks

Monthly Birthday Party –Celebrate

Sponsored by Friends of the Port Senior Center
Friday, February 25 all February birthdays will be celebrated! Reservations are due in to Jill by noon Thurs. Feb. 24!
Cost: Lunch Donation.

HAPPY BIRTHDAY

3 June Gionet

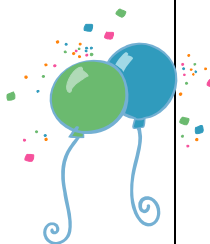
5 Leonard Augustin,
Margaret M. Prom

8 Annette Karcz,

Barbara Hunsicker

9 Connie Gierach, Barb Swietlik

10 Ralph Klopp,



Dorothy Stoughton,

Leah Wunsch

13 *Norma Johnson*

16 *Sally Duman*

17 *Warren Haseley,*

Marge Hoffman

18 *Ruth Johnson*

19 *Ervin Dimmer*

20 *Earl Lettenberger*

23 *Patricia Norman,*

Robert Mason, Ron Weiss

26 *Roe Fosco*

27 *Catherine Radtke*

29 *Charlotte Jushka*

Miscellaneous

Friends of the Port Washington Senior Center

Membership dues are separate from the Center. The Friends brochure highlights the various levels from Basic \$25.00 per year; Associate at \$75.00 per year; Partner at \$250.00 which is every 5 years; and Life Circle Membership at \$3,000 which is a one time payment. It is for couples so an individual would be at \$2,000 lifetime.

Board Members are: Ann Augustine, Harold Johnson, & Dick Stoughton

Thank you to those who have joined!

New Associate members: Mrs. Geraldine Kortsch.

There is the opportunity to designate charitable bequest or one time donations.

Pick up a brochure at the Center if interested.

Port Washington-Saukville Technology

Forms are available at the Center for winter classes offered through the District.