



The Leisure Times

May 2011

Port Washington Senior Center
102 East Pier Street
(262) 284-5821
E-mail: ckiener@ci.port-washington.wi.us

Catherine Kiener, Director
Cindy Harris, Assistant
Steve Broyles, Environment

Center Office Hours: Monday – Thursday 8:30AM – 4:00PM
Friday 8:30AM- 2:00PM

Mission: To promote healthy aging by providing cost effective programs, classes, activities and services to citizen's 55 years and better. Adopted April 10, 2002

Director's Report

The Center gave away some Brewer Tickets in anticipation of our move and May celebration of Older Americans month, "Connecting to the Community". Winners: Barb Roob, Bob LaFlex, Gerry Wilde, and Buy one Get one winners Joan Hansen & Esther Bley.

The month of May will be the last opportunity to participate and enjoy programs and the dining site at 102 East Pier Street. Many members have memories of the building even when it was the fire house. There will be a journal available in May for anyone to jot down a memory.

We look forward to the modern space and elevator as we are reluctant to leave a familiar building that holds fond memories. The future of Senior Services for the city lies in the foundation of the past. As those who moved the Senior Center from church basements, library space, old hill school to the old Firehouse, we pave the way for "the baby boomers" and beyond.

Game Day is a twice monthly activity for those who like to play "table games" instead of card games. Due to a sponsor, there is a prize given out each game day. A Coordinator and players are needed for this group. See page 4.

Center book shelves in the piano room are for members to borrow, return and donate books to. Please bring in books for the shelves up to May 10 and after June 1st! Thank you, many people enjoy it and those who donate are greatly appreciated.

UPCOMING EVENTS:

- **Get Back to Active Life May 4**

- **Non-Surgical Management of Arthritis Thur. May 5**
- **Spring Fling TUES. May 17**
- **Zumba Introductory Class**
- **Birthday Party Fri. noon**
- **Trips: Green Lake Music Festival, Arlington Race Track, Fireside Christmas, Door County and Mall of America get-a-ways pages 7-10**

403 W. Foster Street Property Tentative Move Date: **May 25th or 26th**

The Traffic Safety committee should be meeting in early May (remember to contact your alderman to let him know why angle parking is a need for you). **Each regular group meeting at the center should be getting ready for the move by letting the office know who will help with packing (or supervising) of the groups' supplies.** Please identify group leader in charge by May 10 for coordination.

There will be opportunities to walk through the remodel after elevator installation in May; check with the office for date.

Senior Center Holiday Closing

The Center & Dining Site are closed on Monday, May 30. **No activities** will occur!

Sentry Receipts

Second quarter receipts for April 1 – June 30, 2011 due Tues. July 5. Drop them off any time in the can by the sign in sheet on either level.

Thank You, Thank You

March Newsletter Crew:

Sincere thanks to Pat Voeller, Nelda Bartz, Joan Murphy, Sandi Preisler, Betty Last, Nan Rilling, Geri Johnson, Rosemary Weiland and Loretta Federspiel.

Port Woman's Club: book donations

Unknown donors: yarn, books

Volunteer Opportunities

"One person can make a difference and every person must try." – John F. Kennedy

Senior Games Volunteers-Will receive ***discount on registration*** for you Help with games at Port: Sheepshead; 8-Ball; Horseshoes; Cribbage & Bridge

Tues Public Sheepshead Volunteers-Help set up rotating weeks for the public card game. Prefer volunteers with knowledge of sheepshead.

Bocce Volunteer – Help needed with weekly games

Office Volunteer Assistants- On-call & volunteers are needed. Contact Catherine if you would like to help answer phones, record memberships & payments.

Donations, Gifts or Memorial

Process for memorials: The memorial is to the Port Senior Center with or without a specified purpose. When specified, the Director and group review the purpose to improve or enhance the group. *You can make the Port Senior Center a recipient of a gift, any time of the year.*

The Friends of the Port Washington Senior Center is a 501-C organization which can accept your charitable gifts now or designated for the future. You may also choose to join as a member. Pick up an application at the Senior Center.

Programs & Classes for Healthy

Living

WELLNESS

Aqua Exercise Class

One class is held on Tuesday, Thursday, and Friday at 6:40 AM. Cost is \$6.00 for member and \$10.00 for non-member per month. Class is held at the District Aquatic Center TJ School on Holden St. You do not need to get your hair wet, bring a towel & suit, and increase your flexibility. Register monthly at the Center or call 284-5821.

Arthritis Foundation Exercise Course

Dates: Mon & Wed at 9:45 AM

until May 11, 2011

Meets at Park & Rec building.

No Falls Class Session II

Dates: May 9 – June 22, 2011

A combination of strength, balance, vision and flexibility exercises designed to reduce the number of falls in older adults. The class is 7-weeks at 9:45 at the park and rec office building in May. The fee is \$30.00 for members with a one-time \$15.00 equipment fee for new participants. Non-members \$35.00 with one time fee of \$15.00 per person.

Dance Refresher for Weddings & Anniversary Celebrations

Dates: Thurs. May 5 & 12, 2011

Learn and build on the beginning steps of dances. Instructor is a dance instructor with several competition wins in ballroom. Lower Level of Center 4:00 – 5:00 PM. This class is for those who would like a refresher on the steps or is interested in learning.

Cost: \$15 member; \$25 member couple and \$20 non-member \$35 non-member couple; **Due at registration.** Max class size is 6

Lift to Live Class Session II

Dates: Tues & Thurs to May 12

This 6-week exercise ***program for women 40 and older*** will be offered Tues. & Thurs. mornings 9:30 – 10:30 AM at the Park and Rec Office.

Lift to Live Class Session III

Dates: Tues & Thurs September

Check July issue for detail!

Tai Chi Beginners Course

Dates: Mondays to June 27

KT Rusch will teach this 12-week course. Tai Chi promotes balance, flexibility, & good overall health. Meets lower level of Senior Center. Class fee \$95.00 per member and \$105.00 guest. Class Maximum 12

Tai Chi Continuing Course

Dates: Mondays to June 27

KT Rusch will teach this 12-week course. Tai Chi promotes balance, flexibility, & good overall health. Meets lower level of Senior Center. Class fee \$95.00 per member and \$105.00 guest. Class Maximum 12

Zumba Gold Introduction Course

Dates: Wednesdays April 13 – June 1

Meets lower level at 8:30 AM

Weekly registration open

The lower impact, easy to follow, Latin-dance inspired fitness party... Keeps you in the groove of life! This is the newest aerobic routine designed for adult beginners and participants with physical limitations. The 30-45 workout class is led by a Certified Instructor. Cost: \$10.00 for Senior Center members or Friends of the Senior Center for Course or \$3.00 per class. **Non-members cost:** \$20.00 course or \$4.00 per class!



ENRICHMENT

Computer Classes

Computer Photography returns in June!

Computer Lab

The computers are available for members on Tues. & Thurs. from 10:00 AM-3:00 PM. Must check in & out in office able to use 2-3 hours at a time with no waiting. *No lab time when a class is scheduled.*



Friday Book Talk

The meeting will be May 13 at 9:30 AM at the Library. The review by Muriel Ford is on Sara's Key by Tatiana Rosnay. Come join this lively



discussion. *Preview June 10: Rescue by Anita Shreve with a review by Sally Ziegler.*

Ceramic Pottery- ALL Skill Levels

See what is new with Laurie and the Ceramic members! Coming soon- build by hand with clay. Meets Thursday mornings from 9:00 – 11:00 the fee is \$2.00 per week for members plus glaze, firing, and green ware piece! Non-member fee is \$4.00 per week plus supplies. Ceramic instructor will be present on the 1st, 3rd and 5th Thursdays of the month.

Chicks with Sticks

Meets Wednesday at 1:00 at the Center. share your patterns and ideas. Non-member fee is \$1.00 per week.



Painting – All Media Session II

Dates: Wed. to May 11 Time: 3:15-5:15

Painting – All Media Session III

Dates: Wed. June 1- June 22

This group will be open to painters of all media. We will meet at the senior center. Laurie Sucharda, our instructor, has experience teaching a wide range of media and welcomes you to bring whatever supplies you already have; no need to get all new supplies. Subject & technique discussed weekly. **Cost:** \$40.00 per senior center member \$50.00 per guest.

Make-n-Take Card Camp

Date: Returns late summer



Drawing Lessons for Adults - 6 Openings

Dates: Mondays May 2-June 6 at 1:00 PM

Fee due with Registration or on May 2

Sharpen your drawing skills...for beginners, intermediate and advanced! All are welcome; you need not be a member or senior to join this class! Erin Callahan Blum is the instructor. Basic supplies are provided or bring your own pencils, paper, & watercolor paints.

Class fee: \$55.00 member and \$65.00 guest. Maximum 12 students



Canasta or “Hand and Foot”

New

New

Players meet at 7:00 PM on the 1st & 3rd & 5th Mondays: May 2 & 16 at 7:00 PM. Everyone is welcome! **Non-member fee is \$1.00 per week.**

Learn to play Cribbage

Hands on cribbage learning sessions the 2nd Tuesday of the month during regular cribbage at 1:30. Introduce yourself to the group No fee for members, guests \$2.00 per week, pay in office.

Pinochle

This card game is played Wednesday at 10:30 AM. If interested, come to the center on Wed. There is no fee for members and non-members pay \$1.00 per week.

Game Day – May 12 Only

Meets 2nd & 4th Thursdays at 10:30 AM Play Yahtzee, Dominoes, or other games. Prize drawing for \$5.00 to Sentry Foods compliments of Comfort Keepers. No fee for members; guests pay \$2.00 per month.



Senior Singers –A Community Service Last 2 performances for season are May 16 & 23; not to late to join us!

Mondays at 9:30 -11:00AM in the piano room this group meets weekly. The group sings at local daycares, health centers, senior retirement homes, and more! No charge for members, guests \$1.00 per week.

Library Project at Center

The Library arranges for books and videos to be checked out on an honor system for senior's convenience. Please keep videos 1 week or less! Thank you. *There is a sign posted for the date the Center returns the books and videos to the Library. Please return by the date listed.*

Monday at the Movies-Letters from God Date: Mon. May 16 at 12:30

Synopsis: A young boy fighting cancer writes letters to God, touching lives in his neighborhood and community and inspiring hope among everyone he comes in contact. An unsuspecting substitute postman, with a

New



troubled life of his own, becomes entangled in the boy's journey and his family by reading the letters. *Preview for June: Princess Kaiulani the true story of a Hawaiian Princess efforts to maintain independence against American colonization.*

LEAGUES

Green Felt Club

Summer League

Dates: Anticipated June 1 – Aug or Sept. 7
Check lower level for sign up!



Silver Strikers - Wii Bowling Session II

10 week league March 22 – May 24. League fee will go toward end of season party. **High Scores from Session I Congrats to:** Ann, Marge, Donna, Charlie, & Hal



Adult Horseshoe League

League play begins Tues. May 24 at 9:30 AM at the courts on Moore Road until Aug.30. Practice & handicap play begins May 17. Register by Tuesday, May 10 with fee \$5.00 per member and \$10.00 per non-member.

New

Bocce Ball - Mixed Team Fun

Weekly games begin May 31 at Moore Road Courts at 9:30. No fee for members and \$15.00 for guests for the summer season.

Weekly Ongoing Activities

Senior Singers (Chorus) –Monday

Aqua Exercise –Tues., Thurs., Fri., at 6:40AM

Piano Lessons –Tuesdays by appointment

Green Felt Club – Senior 8 Ball League Wed., open play Mon & Fri. after 2:00, Sat at 9:00

Chicks with Sticks- Wed. at 1:00PM

Ceramics – Thurs. at 9:00AM

Wellness Classes–Tai Chi, No Falls or Arthritis, Lift to Live, and more various days check details above. Monthly Blood Pressure Checks – See Calendar Page

For information on class cost please call the center at 284-5821!

Leagues – May or may not be seasonal Green Felt; Wii; Horseshoes; Bocce

Card & Game Clubs

There is no charge for members as your membership assists with center operations.

Non-members & out of town participants contribute \$1.00 per week in the office!

Bridge – Tues. Ladies Bridge & Fri. at 1:00PM

Cribbage – Tues. at 1:00PM

Sheepshead – Mon & Thurs. at 1:00PM

Game Day – 2nd & 4th Thurs. at 10:30

Public Card Parties:

Canasta 1st & 3rd Mon. 7:00PM

Sheepshead – Tues. 7:00 PM

Pinochle- Wed. 10:30 AM



Clubs and Organizations Meeting

At the Center

Open 8-Ball/Greenfelt Club – Mon.-Fri. at 2:00PM (except when needed for class space) And Sat. at 9:00AM.

City Commission on Aging – 2nd Mon. at 7:00PM in the lower level

VFW – Last Wed. at 7:00PM

Special Events

LAKESIDE TEA SOCIETY

MAY 18 –NO Program-Contact office if you can help pack tea cups May 18 at 1:30..

American Heritage Tea

Date: Wed. June 15 at 1:30 PM

Join the *Heritage Musick & Daunce Society* as they present a program in honor of Flag Day and our early American English traditions in music and dance. American Classic Tea from South Carolina Low country will be served.

Registration includes the program and tea; participants must pre-register. Register by Monday, June 13. Cost: \$3.00 members, and \$5.00 for guests. *Preview for July: Ice Tea*



Spring Fling

All Member Party with Volunteer Recognition

Date: Tuesday, May 17

Location: Saukville Legion on Hwy 33

Registration open through May 13

The Senior Center Celebrates Older Americans Month, *Connecting Community*, with the Spring Fling & Volunteer Recognition at the American Legion in Saukville. This year, the event theme is, Connecting Community through volunteers.

The honored volunteers:

The Office Assistants

The entertainment:

The Garth Neustadter Trio!

The Trio has delighted audiences for over 10 years and features Garth a violinist, saxophonist, vocalist who was selected in 2005 as one of the 20 most accomplished young men in America by USA Today. His mother Kristin plays keyboard and his father Gary plays percussion. The range of music is from show tunes, popular standards, country, bluegrass, jazz, easy listening and Celtic. This show will be designed for our group's enjoyment and entertainment.

Join in the fun of this all member event with pot-luck, door prizes, entertainment, and recognition of Center volunteers from group leaders to office help! **Broasted Chicken & dessert will be provided.**

COST: Bring either a dish to pass from veggies, relishes, fruit, salad, or hot dish, let office know what dish you will bring with registration, or pay \$8.00 by May 13th.

Monthly Birthday Party – Sponsored by Friends of the Port Senior Center

THIS is the Last official party at 102 East Pier Street! Monday, May 23, all May birthdays will be celebrated!

This is to celebrate with members and friends your special day. The celebration will be in conjunction with the dining site lunch. Reservations are due to Jill by noon Fri. May 20! **Cost:** Donation for lunch!



Port Washington Senior Center & Port Washington Dining Site Events:

4 - Blood Pressure Checks

-Site Council

6-Mother's Day at the Horse Races

9-Money Bingo with Eleanor

16 - Information and Assistance Specialist

16 - Monday at the Movie *Letters to God*

- 19 - Word Trivia Plus
- 23 – Prize Bingo
- 23 – May Birthday Celebration

Community Events & Information

Monthly Blood Pressure Checks

The Senior Center hosts monthly screenings by volunteer retired nurses. The check ups are the 1st Wed. of the month, **May 4 at 11:30-12:00.** No charge.

Tuesday Night Sheephead

Every Tuesday, at 7:00 a public sheephead party is played. The cost is \$1.50 with prize money paid out to the top scorers. Rotating Volunteer Coordinators needed to start May 31st; contact office if you can help.



SPECIAL EVENTS FOR OLDER AMERICANS MONTH

1. Get Back to an Active Life

Date: Wed. May 4 12:45 – 1:45

This is a comprehensive seminar on knee and hip pain sponsored by Columbia St. Mary’s. Pre-registration is encouraged by calling 284-5821 or 414-963-WELL(9355).

2. Non-Surgical Management of Arthritis

Date: Thur. May 5 at 12:30 PM

Hosted by the Arthritis Foundation and Port Washington Senior Center the speaker is Dr. Steve Kaplan an Orthopedic Surgeon.

Cost: Free and open to public; RSVP by Wed. May 4th for lunch reservation at noon or for program only by Tues. May 3rd.

Ozaukee Senior Games

Registration due Mon. May 16, 2011.

Dates: June 1 – 20

Registration forms are available at the upstairs & lower level sign in locations. The Ozaukee Senior Games are a fun, friendly competition for seniors in Ozaukee County, hosted by the 3 multi-purpose senior centers Cedarburg, Grafton, Port & Mequon Seniors.

Included in the \$8.00 registration fee is an opening dessert social, t-shirt, and awards breakfast. Games include: **NEW Pickle Ball**, Relay walk, chicken foot dominoes, Bocce ball, 8-Ball, Cribbage, 50 yard swim, golf, shuffleboard, sheephead, bowling, bridge, tennis, bike ride, and horseshoes!

Skin Cancer Screening Registration

Date: Fri. May 13 8:45 -10:45

Call the office to register for a 5 minute screening by Dermatology Associates to be held at the Center. Register by Wed. May 11. No charge public event.

Lunch Bunch at No No’s in Newburg

Date: Thur. May 26

Join us for lunch and conversation at this monthly dining out group. Meet at No No’s at 11:30 AM. Cost is on your own. Reservation due to Center by Mon. May 23.

Ozaukee Senior Conference

Save the date of **Tues. June 14** for this annual fun, educational, & resourceful day featuring the lunch entertainment. Registration forms are available at the Center.

Balance (or Nordic)Walking

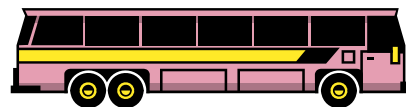
Will return in summer.

Oz MED Drop Project

Dispose of unused, or out –dated medications in the drug collection unit at the Port Police Department daily 8AM – 5PM.

Ozaukee County Fair

Firehouse Friends open to all members who would like to enter in the fair will meet to go over entry forms & dates to bring in items watch for date in June Leisure Times!



One Day Adventure Trip News

Motor coach travel has the least emissions of plane or motor travel. Save the planet travel by bus with us – meet new people!

Trip Payment & Refund Policy: Prices are quoted for center members: guests add \$4.00 for day trips or as quoted for a specific trip as a non-member price. Sign up is on or after the call in day listed with each trip. You must register in advance and pay by the deadline or your name may be dropped from the list!

Cancellations are not guaranteed a refund. Cancellations within FOUR weeks will be refunded only if someone fills the opening! There are trips we reserve the right to advertise which are sponsored by travel agencies. It is for your convenience that we advertise them. All other information is handled by the agency. Contact the office regarding any special needs you have.

WHEN LEAVING ON A DAY TRIP PLEASE PARK YOUR CAR IN THE SECOND & THIRD SET OF PARKING ROWS. THANK YOU!

A Closer Walk with Patsy Cline –Wait List

Date: Thur. May 12

Depart: 8:00 AM Return around 6:30 PM

The Beauty of Green Bay – Only 6 seats

Date: Tues. May 24, 2011

Payment due with registration!

The morning will begin with a fascinating guided city tour of Green Bay. You will hear unique, little-known stories of the Green Bay area, told throughout the tour. You will see the city's bustling international seaport and architecturally diverse downtown area. Lunch at Bay City Smokehouse Menu: Garden Salad with Assorted Dressings, Petite Filet with Shallot Butter and Sliced Mushrooms, Baked Potato, Chef's Choice Vegetable, Rolls and Butter, Coffee, Tea or Milk, Chef's Choice of Dessert). After lunch enjoy the Green Bay Botanical Gardens, & Bay Beach wildlife area. Depart Port 8:40 AM return around 5:45 PM. Cost: \$75.00 per member or guest!

GREEN LAKE THRASHER OPERA

HOUSE WITH RIPON – 12 Seats

Date: Wed., June 8, 2011

Payment due May 4, 2011

Return to the Green Lake area and the Green Lake Festival of Music. Virtuoso violin meets fiery Russian accordion at the historic Thrasher Opera House in Green Lake. Stop at Ripon Good Cookies Factory Outlet Store. There is some walking.

Cost: \$59.00 per member/63.00 per guest

Tour Includes: Escort, deluxe motor coach, catered lunch at C. J's at the Wayside and all admissions. Depart 8:00 AM return 6:00 PM.

BREWER'S VS TAMPA BAY RAYS

Date: Wed. June 22

Payment due May 23, 2011

We have great seats behind first base at the top of section 109, so not much walking! Cost: \$43.00 Includes ticket, escort, and deluxe motor coach. Depart Port at 10:45 AM

David at the Fireside

Date: Thur. July 14

Payment due June 1, 2011.

This show tells the story of the young man David and how he grows from shepherd to king of Israel. A life with danger, romance, music, laughter, and faith. Includes the songs: The Bigger They Are, It Takes a Woman, and With all of my Heart. A fast paced, funny must-see musical.

Featured Menu: Orchard Salad; Freshly Baked Breads from The Fireside Ovens **Chicken Vienna** topped with Jones Cherry Wood Smoked Ham, French Boursin Cheese, and presented on a Madeira Wine Sauce. Served with Sweet Potato Soufflé with a Pecan Crust, and Fresh Asparagus Spears with Sweet Red Pepper Ribbons; Dessert is **Lemon Chess Tart** served with Coffee, Tea and Milk
Cost: \$86.00 member and \$89.00 guest includes deluxe motor coach, dinner, show, gratuities, and escort! Depart Port at 7:45 AM return about 6:30 PM.

Chicago: The Polish & German City-Filled Accepting Waiting List

Date: Tuesday, July 19

Payment is due June 15!

Chicago has the largest **POLISH** population in

New

New



the world second only to Warsaw!
Learn the fascinating history of the Polish people who came to America in the 1800's to build a better life, and they are still coming today! Visit Chicago's Famous **LUTZ GERMAN BAKERY**; TOUR - The monumental **ST. ALPHONSUS German Church**; LUNCH at The Red Apple **Enjoy a Huge Buffet of Polish Specialties**. Everything you can think of, and more. Pierogis, Roast Duck, Dumplings, Roast Pork, Polish Sausage, Herring, Roast Beef, Salads, Blintzes, Desserts. Go back as many times as your heart desires!
EXPERIENCE -The magnificent **Polish ST. HYACINTH CHURCH** which recently enjoyed a \$1 Million Dollar restoration of its interior, **VISIT** -This most popular **SAUSAGE SHOP...**When you enter the aroma will have your mouth watering!... Across the street is a favorite **POLISH BAKERY**.
COST: \$80.00 includes deluxe motorcoach, all admissions and gratuities and a delicious Polish lunch buffet. BRING a cooler for your goodies.
Depart 7:15 AM.

Seven Brides for Seven Brothers

Date: Wed. Sept. 7, 2011

Many consider it the greatest movie musical of all time! With its high-stepping athletic dancing, its exuberant high spirits, its sidesplitting good humor, and its sweeping romantic escapades, SEVEN BRIDES FOR SEVEN BROTHERS is as joyous a musical as you'll see anywhere. And now this favorite show makes a triumphant return to The Fireside in an all new production full of color and excitement and all the majestic beauty of the Rocky Mountains. You'll laugh and cheer at this time-honored tale of seven boisterous unruly mountain men who go to hilarious lengths to find and marry the women of their dreams.

Cost: \$86.00 member and \$89.00 guest includes deluxe motor coach, dinner, show, gratuities, and escort! Depart Port at 8:00 AM. Payment due August 8, 2011.

Drury Lane Brunch & Sound of Music

Date: Sun. Nov. 13, 2011

Registration now open

The Drury Lane exquisitely prepared **Sunday Brunch Buffet** was voted one of the "Top Brunches in the Country." On this tour you'll find out why. The menu features, Champagne, Coffee, Tea and Iced Tea, Assorted Breads, Muffins, Rolls, assorted Cheese and Crackers, Assorted Salads, Fresh Grilled Vegetable Display, Oysters Rockefeller, Iced Shrimp, Smoked Lox and Bagels, Eggs Benedict, Scrambled Eggs, Bacon, Sausage, Made to Order Omelets, Fresh Mini Donut Station, Fresh Belgian Waffles Station, Cheese Blintzes, Quiche Lorraine, Potato Au Gratin, Potato Gnocchi, Beef Stroganoff with Noodles, Meatballs with Marinara Sauce, Salmon, Crabmeat Cakes, Carving Station (beef, ham and turkey with traditional dressings), Pasta Station, Pizza Station, Fresh Fruit Station, Dessert Table, Hand Scooped Ice Cream, Soft Serve Station, and Sundae Station.

Cost: \$110 per member or guest
Payment due October 5, 2011. Depart 9:00 AM return approximately 7:00 PM.

FIRESIDE CHRISTMAS

Date: Thurs. Nov. 10

We have excellent seats for this *all new edition!* This season we return to the tradition that has made The Fireside the number one choice for Christmas entertainment for hundreds of thousands of people from around the nation and around the world. Named one of the country's finest attractions by the National Bus Association, The Fireside's Christmas show resumes its long history of beautiful singing, breath-taking dancing, gorgeous costumes, rib-tickling fun, and a deeply spiritual commitment to the real meaning of the holiday. It's always original with new songs, new dances, and a new cast but the heart of the show never changes. It is the perfect way for the whole family to capture the holiday spirit. It is, simply, one of the best Christmas revues you'll ever see.

MENU: Oriental Salad

Napa Cabbage, Onions, Ramen Noodles, Sesame Seeds, Sliced Almonds and Diced

New

Breast of Steamed Capon tossed in a Soy Red Wine Vinaigrette Dressing. Freshly Baked Breads from The Fireside Ovens

Baked Holiday Ham

Jones Cherry Wood Smoked Premium Ham with Golden Rum Raisin Sauce. Served with Escaloped Potatoes au Gratin, Pineapple and Pecan Soufflé, and Asparagus Spears with Young Carrots.

Santa's Chocolate Chimney

Dark Chocolate Tower filled with White Chocolate Hazelnut Frangelico Mousse, topped with Red Cherries. Presented on Crème Anglaise flavored with Grand Marnier. Coffee, Tea and Milk. **Cost:** \$86.00 member and \$89.00 guest includes deluxe motor coach, dinner, show, gratuities, and escort! Depart Port at 8:00 AM. Return 6:30PM
Payment due Oct. 13.

FIRESIDE CHRISTMAS December

Date: Wed. Dec. 14

See description for Nov. trip.
Payment due: Nov. 2, 2011.

Oneida Bingo & Casino Trips

Yearly schedule available at Center.
Cost is \$28.00 per person with casino rebate on Fun Club Card. Departs from Port Park & Ride Lot at 7:30 AM. Landmark Tours provides this trip several times a month. Call 375-1426 to register.

2011 Mini & Extended Trips

DOOR COUNTY GET-A-WAY

Dates: Tues. Aug. 23-Thur. Aug. 25, 2011

Only 6 Seats Available

Deposit due with registration: \$100 person

This motor coach trip includes 2 nights at Rowley's Bay (used to be called Wagon Trail Resort) featuring Grandma's Swedish Bakery, Washington Island Tour, Dan Meunier concert, Progressive Dinner Tour, Traditional Fish Boil, and more. Detailed flyer at the Center. Cost: \$425.00 Double; 405 triple; 395 quad; 525 single with a \$100 per person **deposit due by March 15, 2011** and final payment due July 8, 2011. **Escort: Bonnie**

ISLANDS OF NEW ENGLAND

Dates: Sept 16 – 23, 2011

Reservations available on first come basis if space permits - must include deposit of \$250.00 see below

Highlights Providence Newport, Boston, Martha's Vineyard, Nantucket, & Hyannis including a cranberry bog, lobster feast, Cape Cod Dinner Train, ferry ride, 7 Breakfasts, 4 Dinners, Roundtrip air from Milwaukee Intl, air taxes & fees/surcharges, hotel transfers. PICK UP detail brochure at Center. Price per person for double is \$2,199; single 2,699; & triple \$2,169. \$250 deposit due with reservation made payable to Collette Vacations. **Final payment due July 18.**

GREEN BAY PACKERS GAME

Watch for the date once the lockout is resolved. It will be a home Milwaukee game.

WINE, CHEESE, FRIENDS, AND ME

Dates: October 28- Oct. 30, 2011

Treat yourself to an indulgent getaway weekend with shopping at the Mall of America! 2 nights at the new



Hampton Inn, discount coupons, Plymouth Playhouse show, Twin Cities Highlight tour, ultimate pajama party with Chocolate, Wine & Cheese, stops on way home at Burnstad's European Village, Silent Rooster & Amish Country Corner in Tomah.

Cost: \$389 double; \$499 single; and \$374 for triple. Includes: 3 meals (2 breakfasts, 1 dinner) Hampton Inn, deluxe motor coach, theater admission, wine & cheese, and city tour. \$100 Deposit Due July 15, 2011 with balance due Sept 15, 2011. DETAILED flyer with costs, travel protection plan, at the Center. Departure time to be announced.

Center Operations & Procedures

New

We encourage our members who **may need** special assistance to register for events, programs, and trips **with a friend, family or caregiver to provide the assistance** they may need. Due to the limit of staff, the Center can not provide one-on-one assistance during the event, class, or trip. Please register with staff so we can be aware of individual needs.

2011 Membership renewal- EVERYONE needs to fill out a new membership card!

Membership- Annual membership is paid January to December. **Individual fee is \$15.00 and Couple \$20.00** for City and Town of Port Residents.

Out of town individuals to receive membership the fee is \$35.00 per person or \$62.00 per couple per year, it includes the newsletter and may be paid quarterly; or may subscribe to the **newsletter for \$10.00 per year** *Value of membership in the Center* offers you a place to read the Journal Sentinel, Ozaukee Press, News Graphic, & a variety of magazines including Newsweek, Outdoor Living, Good Housekeeping, Family Fun, & more saving you money on subscriptions!

Recyclables – There is a container on both levels for aluminum cans. The can should be rinsed then deposited in the container. Clean cans are preferred for recycling. Thanks to all who help.

Welcome New Members

We look forward to seeing you at the Center! Stop in and reintroduce yourself or use your free coupon for lunch!

Joan, Biever, Lois Schmidt & Judy Cleveland

Monthly Birthday Party –Celebrate

Sponsored by Friends of the Port Senior Center Monday, May 23 all MAY birthdays will be celebrated! **Reservations are due** in to Jill by noon Fri. May 20! Cost: Lunch Donation.

HAPPY BIRTHDAY

2 *Rosemary Weyker*

3 *Kathleen Johnson,*

Vincent Weyker

4 *Sandy Lanser,*

Rosemary Weiland

5 *Ross Campbell*

6 *John Jacque, Dale Plazk,*

Sharon Swatek, Mary Jane Stern

9 *Jackie Michaud,*

10 *Louise Buser*

11 *Esther Bley*

12 *Ken Wunsch*

14 *Marie Irwin, Wayne Hoffman*

Dianne Robertson,

Richard Stoughton, Frank Schmit

15 *Susan Zembrzuskí*

17 *Marjorie Erlauer,*

Dorothy Fletcher

18 *Bertram Wester, James Lowney,*

Mildred Russo

19 *Alice Casey, Helen Michels*

20 *Leroy Bley*

24 *Lois Schanen,*

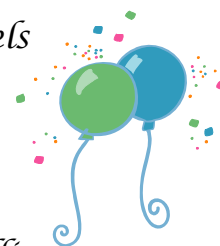
25 *Michael Frome*

26 *Barb Roob*

27 *Ann W. Lee, Nanette Rilling*

28 *Betty Czisny*

30 *Laverne Weiss, Sally Ehrlich*



In Memorium

Our sympathies are extended to the family of:
Al Slater

Miscellaneous

Friends of the Port Washington Senior Center

Membership dues are separate from the Center. The Friends brochure highlights the levels from Basic \$25.00 per year; Associate at \$75.00 per year; Partner at \$250.00 which is every 5 years; and Life Circle Membership at \$3,000 which is a one time payment. It is for couples so an individual would be at \$2,000 lifetime.

SENIOR BOARD ELECTIONS

Three incumbents have agreed to run and only four candidates are needed. **The incumbents are Bev Schleg, Judy Hahn, and Ron Weiss.** The Board of Directors will seek nominations for a fourth person. The usual ballot is not

needed this year due to the number of individuals running.